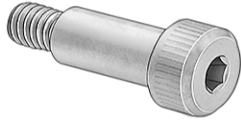


Hardware & Accessories

H
A
R
D
W
A
R
E
*
H
A
R
D
W

SHOULDER BOLTS



Part	Description	UOM
0008710	BOLT,SHLD,M10 X 1.5,20.00,STL	EA
P-3717	BOLT,SHOULDER, M12 X 25 MM LG	EA
P-1080-5	BOLT,SHOULDER,10-24X.25X.50 MM	EA
P-1080-1	BOLT,SHOULDER,5/8-11X.75X1.5	EA
P-3267	BOLT,U,5/16-18 X 1.50	EA

OTHER BOLTS



Part	Description	UOM
00004695	BOLT,1/0 CU STD BRL,1 HOLE 1/2" BOLT	EA
0014559	BOLT,1/2" X 1/2,3/8"-16	EA
0014560	BOLT,1/2" X 3/4, 3/8"-16,STL	EA
0014557	BOLT,1/4" X 1/2,#10-24,STL	EA
0014558	BOLT,3/8" X 1 1/4, 5/16"-18	EA
EMT705-25	BOLT,HEX,8MMX1.25 X 25MM LG	EA

SOCKET HEAD SET SCREWS



Part	Description	UOM
Y073014	SCREW,SHSS,#10-24,1/4" X 3/4"	EA
Y073007	SCREW,SHSS,.312X.625 LG 1/4-20 THREADS	EA
EMT500-24	SCREW,SHSS,.375X.375 5/16-18 GRADE 8	EA
EMT665-20	SCREW,SHSS,.375X1.5 LG,5/16-18	EA
EMT438-16	SCREW,SHSS,.62X1.25	EA
EMT438-20	SCREW,SHSS,.750X1.00 THREAD&BODY MUST BE CONCENTRIC	EA
EMT438-24	SCREW,SHSS,.750X1.25 THREAD&BODY MUST BE CONCENTRIC	EA
EMT438-28	SCREW,SHSS,.75X1.5 THREAD&BODY MUST BE CONCENTRIC	EA
EMT502-8	SCREW,SHSS,.75X1.75 THREAD&BODY MUST BE CONCENTRIC	EA
EMT502-28	SCREW,SHSS,0.50,0.50,3/8-16	EA
EMT737-8	SCREW,SHSS,1/2 X 1.75 LG	EA
EMT737	SCREW,SHSS,1/4 X .500	EA
EMT737-16	SCREW,SHSS,1/4"	EA
EMT686-10	SCREW,SHSS,1/4",1",#10-24,1 3/8",STL	EA
Y072038	SCREW,SHSS,1/4X.62	EA
Y073011	SCREW,SHSS,10-24 X .25	EA
0015524	SCREW,SHSS,10-24X.750	EA
1-4948-20MM	SCREW,SHSS,10MM,30MM,8MM-1.25,43MM,STL	EA
1-4948-30	SCREW,SHSS,10MMX20MM	EA
1-4948-60	SCREW,SHSS,10MMX30,8MM THREAD	EA
0015525	SCREW,SHSS,10MMX60,8MM THREAD	EA
0015526	SCREW,SHSS,12MM,25MM,10MM-1.5,41MM,STL	EA
P-4308	SCREW,SHSS,12MM,35MM,10MM-1.5,41MM,STL	EA
P-4258	SCREW,SHSS,12MMX45MM LG	EA
1-4942-25	SCREW,SHSS,12MMX50MM LG	EA
1-4942-30	SCREW,SHSS,16MMX25MM LG	EA
1-4869-40	SCREW,SHSS,16MMX30MM	EA
1-4869-45	SCREW,SHSS,20MMX40MM LONG	EA
1-4869-70	SCREW,SHSS,20MMX45MM	EA
0016325	SCREW,SHSS,20MMX70 MM L	EA
0016322	SCREW,SHSS,3/4", 1.25", 5/8"-11, 2 1/8", STL	EA
0016323	SCREW,SHSS,3/4", 2.75", 5/8"-11, 3 5/8", STL	EA
Y070313	SCREW,SHSS,3/4", 3/4", 5/8"-11, 1 5/8", STL	EA
EMT500-16	SCREW,SHSS,3/8-16 X .75	EA
EMT500-40	SCREW,SHSS,3/8X1.00	EA
Y073003	SCREW,SHSS,3/8X2.50	EA
Y073002	SCREW,SHSS,5/16-18X.375,SS	EA
Y073012	SCREW,SHSS,5/16-18X.500	EA
Y073016	SCREW,SHSS,5/16-18X1.25	EA
EMT487-20	SCREW,SHSS,5/16-18X2.00	EA
P-1664-5	SCREW,SHSS,5/16X1.25	EA
P-1664-3	SCREW,SHSS,5/16X1.50	EA
0016326	SCREW,SHSS,5/16X1/4 LG	EA
0015521	SCREW,SHSS,5/8", 1.25", 1/2"-13, 2", STL	EA
0015522	SCREW,SHSS,5MM,4MM-.07,30MM,STL	EA
0016324	SCREW,SHSS,6MM,10MM,5MM-0.8,19.5MM	EA
1-4948-50	SCREW,SHSS,6MM,10MM,M5-.8,19.5MM,STL	EA
0015520	SCREW,SHSS,8,50.00,STL	EA
P-1665-5	SCREW,SHSS,8MM,10MM,6MM-1,21MM,STL	EA
0014500	SCREW,SHSS,8MM,30MMLG,M6X1	EA
0014503	SCREW,SHSS,M10 X 1.5,16MM	EA
0014504	SCREW,SHSS,M10 X 1.5,30MM	EA
0014505	SCREW,SHSS,M10 X 1.5,40MM	EA
0014506	SCREW,SHSS,M10 X 1.5,50MM	EA
0017235	SCREW,SHSS,M10 X 1.5,60MM	EA

A R E

*

1-4948-20	SCREW,SHSS,M10,1.25,50mm,STEEL	EA
1-4942-35	SCREW,SHSS,M10X20MM,M8	EA
1-4942-40	SCREW,SHSS,M12,35.00	EA
1-4942-20	SCREW,SHSS,M12,40.00	EA
1-4869-20	SCREW,SHSS,M16,20MM,RH,STL	EA
1-4869-25	SCREW,SHSS,M20,20.00	EA
1-4869-30	SCREW,SHSS,M20,25.00	EA
1-4869-35	SCREW,SHSS,M20,30.00	EA
1-4869-50	SCREW,SHSS,M20,35.00	EA
0014490	SCREW,SHSS,M20,50.00	EA
0014491	SCREW,SHSS,M5 X .80,12MM	EA
0014492	SCREW,SHSS,M5 X .80,16MM	EA
0014493	SCREW,SHSS,M5 X .80,25MM	EA
0014494	SCREW,SHSS,M6 X 1.0,12MM	EA
0014495	SCREW,SHSS,M6 X 1.0,16MM	EA
0014496	SCREW,SHSS,M6 X 1.0,20MM	EA
0014497	SCREW,SHSS,M6 X 1.0,25MM	EA
0014224	SCREW,SHSS,M6 X 1.0,30MM	EA
P-4719	SCREW,SHSS,M6 X 1.0,50MM	EA
0014499	SCREW,SHSS,M6X8MMX12MM LG	EA
0014498	SCREW,SHSS,M8 X 1.25,12MM	EA
0014502	SCREW,SHSS,M8 X 1.25,16MM	EA
P-1665-2	SCREW,SHSS,M8 X 1.25,20MM	EA
1-4948-10	SCREW,SHSS,M8 X 10MM LG	EA
EMT443L-8	SCREW,SHSS,M8,10MM,STLSHLD DIA: 10MM, SHLD LENGTH 10MM	EA

BUTTON HEAD CAP SCREWS

H A R D W A R E

*



Full Threads

Part	Description	UOM
0017310	SCREW,BHCS	EA
0014530	SCREW,BHCS,#10,0.38,STNLS	EA
0014521	SCREW,BHCS,#10-24 X 3/8	EA
EMT622-8	SCREW,BHCS,#4-20 X 1/4	EA
0014522	SCREW,BHCS,#4-40,1/2,STL	EA
EMT465-16	SCREW,BHCS,#4-40,3/8	EA
EMT465-14	SCREW,BHCS,#6-32,1,STL	EA
0014529	SCREW,BHCS,#6-32,7/8,STL	EA
EMT466-16	SCREW,BHCS,#8-32 X 3/4	EA
EMT466-4	SCREW,BHCS,#8-32,1,STL	EA
0015830	SCREW,BHCS,#8-32,1/4,STL	EA
0015831	SCREW,BHCS,1/2",1/2"-13,3",STL,RND HEAD	EA
0015832	SCREW,BHCS,1/2",1/2"-13,4",STL,RND HEAD	EA
0015833	SCREW,BHCS,1/2",1/2"-13,5",STL,RND HEAD	EA
0015834	SCREW,BHCS,1/2",1/2"-13,6",STL,RND HEAD	EA
0016372	SCREW,BHCS,1/2",1/2"-13,8",STL,RND HEAD	EA
0016356	SCREW,BHCS,1/4"-20,3/8",STL	EA
0016357	SCREW,BHCS,1/4"-28,1",STL	EA
0016358	SCREW,BHCS,1/4"-28,1.25",STL	EA
0016355	SCREW,BHCS,1/4"-28,1.5",STL	EA
0016354	SCREW,BHCS,1/4"-28,3/4",STL	EA
Y074014	SCREW,BHCS,1/4"-28,3/8",STL	EA
EMT468-8	SCREW,BHCS,1/4-20 X 1.25 LG	EA
Y074002	SCREW,BHCS,1/4-20X.50	EA
EMT468-12	SCREW,BHCS,1/4-20X.500	EA
Y074007	SCREW,BHCS,1/4-20X.75	EA
EMT468-24	SCREW,BHCS,1/4-20X1.00	EA
EMT669-6N	SCREW,BHCS,1/4-20X1.50	EA
EMT669-8	SCREW,BHCS,1/4-28X.38,NYLOK	EA
EMT467-6	SCREW,BHCS,1/4-28X.50	EA
EMT467-16	SCREW,BHCS,10-24X.38	EA
EMT480-10	SCREW,BHCS,10-24X1.00	EA
0013142	SCREW,BHCS,10-32 X 1/2"LONG	EA
Y074001	SCREW,BHCS,10-32,0.38,KIT	EA
EMT470-5	SCREW,BHCS,10-32X.250	EA
EMT470-6	SCREW,BHCS,10-32X.31	EA
EMT470L-6	SCREW,BHCS,10-32X.38	EA
EMT470-8	SCREW,BHCS,10-32X.38,W/NYLOK	EA
Y074005	SCREW,BHCS,10-32X.50	EA
EMT470-12	SCREW,BHCS,10-32X.500	EA
EMT470-32	SCREW,BHCS,10-32X.75	EA
0015503	SCREW,BHCS,10-32X2.00	EA
0015835	SCREW,BHCS,10MM-1.5,40MM,STL	EA
0016315	SCREW,BHCS,3/8",3/8"-16,2 1/4",STL RND HEAD	EA
0016314	SCREW,BHCS,3/8"-16,1.25",STL	EA
0016319	SCREW,BHCS,3/8"-16,1.5",STL	EA
0016313	SCREW,BHCS,3/8"-16,1/2",STL	EA
Y074006	SCREW,BHCS,3/8"-16,3/4",STL	EA
Y074003	SCREW,BHCS,3/8-16X.625	EA
0008807	SCREW,BHCS,3/8-16X1.00	EA

HARDWARE * HARDWARE



Partial Threads

0008783	SCREW,BHCS,4.00,10.00,ZINC	EA
EMT622-4	SCREW,BHCS,4.00,20.00,STL	EA
EMT622-14	SCREW,BHCS,4-40X.25	EA
0008808	SCREW,BHCS,4-40X.88	EA
0016374	SCREW,BHCS,5.00,10.00,ZINC	EA
0016353	SCREW,BHCS,5/16"-18,1",STL	EA
0016373	SCREW,BHCS,5/16"-18,1.5",STL	EA
0016318	SCREW,BHCS,5/16"-18,1/2",STL	EA
EMT469-12	SCREW,BHCS,5/16"-24,1",STL	EA
EMT469-14	SCREW,BHCS,5/16-18X.75	EA
Y074011	SCREW,BHCS,5/16-18X.88	EA
EMT469-36	SCREW,BHCS,5/16-18X1.250	EA
EMT469-76	SCREW,BHCS,5/16-18X2.25	EA
Y074013	SCREW,BHCS,5/16-18X4.75	EA
EMT465-4	SCREW,BHCS,5/16X1.75	EA
EMT465-6	SCREW,BHCS,6-32X.25	EA
EMT465-8	SCREW,BHCS,6-32X.38	EA
EMT465-12	SCREW,BHCS,6-32X.50	EA
EMT466-10	SCREW,BHCS,6-32X.75	EA
EMT466-6	SCREW,BHCS,8-32,0.63	EA
Y074008	SCREW,BHCS,8-32X.38	EA
EMT466S-6	SCREW,BHCS,8-32X.38,GRADE 8	EA
EMT466-8	SCREW,BHCS,8-32X.38,STAINLESS	EA
EMT466B-8	SCREW,BHCS,8-32X.50	EA
EMT466-12	SCREW,BHCS,8-32X.50 BRASS TIP	EA
0016246	SCREW,BHCS,8-32X.75	EA
0015494	SCREW,BHCS,8MM-1.25,25MM,STL	EA
0008784	SCREW,BHCS,8MM-1.25,50MM,STL	EA
0014333	SCREW,BHCS,M10 X 1.5,25.00,STL	EA
0014332	SCREW,BHCS,M10 X 1.50,16MM	EA
0003334	SCREW,BHCS,M10 X 1.50,25MM	EA
0016612	SCREW,BHCS,M3,10.00,STNLS REF MM	EA
0014315	SCREW,BHCS,M3-.5,10,STL	EA
0014313	SCREW,BHCS,M4 X .70,12MM	EA
0014314	SCREW,BHCS,M4 X .70,6MM	EA
EMT684-10	SCREW,BHCS,M4 X .70,8MM	EA
EMT684-10	SCREW,BHCS,M4X0.7X10	EA
EMT684-6	SCREW,BHCS,M4X0.7X10	EA
EMT684-8	SCREW,BHCS,M4X6	EA
0014318	SCREW,BHCS,M4X8	EA
0014319	SCREW,BHCS,M5 X .80,10MM	EA
0014320	SCREW,BHCS,M5 X .80,12MM	EA
0014316	SCREW,BHCS,M5 X .80,16MM	EA
0014317	SCREW,BHCS,M5 X .80,6MM	EA
0008745	SCREW,BHCS,M5 X .80,8MM	EA
0008791	SCREW,BHCS,M5 X 0.8,10.00,STL	EA
0008752	SCREW,BHCS,M5 X 0.8,10.00,STN STL	EA
0008753	SCREW,BHCS,M5 X 0.8,12.00,STL	EA
0017308	SCREW,BHCS,M5,16.00,STL	EA
0008746	SCREW,BHCS,M5,16.00,STNLS	EA
0016347	SCREW,BHCS,M5,20.00,STL	EA
EMT716-12	SCREW,BHCS,M5-.8,25MM,STL	EA
EMT716-30	SCREW,BHCS,M5X.8X12	EA
EMT716-6	SCREW,BHCS,M5X.8X30	EA
0014324	SCREW,BHCS,M5X0.8X6LG	EA
0014325	SCREW,BHCS,M6 X 1.00,12MM	EA
0014326	SCREW,BHCS,M6 X 1.00,16MM	EA
0014327	SCREW,BHCS,M6 X 1.00,20MM	EA
0014328	SCREW,BHCS,M6 X 1.00,35MM	EA
0014322	SCREW,BHCS,M6 X 1.00,40MM	EA
0011391	SCREW,BHCS,M6 X 1.00,8MM	EA
EMT717-25	SCREW,BHCS,M6,10.00,STNLS	EA
y074009	SCREW,BHCS,M6X1.0X25	EA
0014329	SCREW,BHCS,M6X1X20MM,GRADE 8	EA
0012123	SCREW,BHCS,M8 X 1.25,12MM	EA
0014330	SCREW,BHCS,M8 X 1.25,16.00,STL	EA
0014331	SCREW,BHCS,M8 X 1.25,20MM	EA
0016346	SCREW,BHCS,M8 X 1.25,35MM	EA
EMT687-35	SCREW,BHCS,M8-1.25,25MM,STL	EA
0014186	SCREW,BHCS,M8-1.25X35MM LONG	EA
EMT687-20	SCREW,BHCS,M8X1.25,50.00,STL	EA
0003023	SCREW,BHCS,M8X20	EA
0014368	SCREW,BHCS,SS,M4X8	EA
0014371	SCREW,BHCS,STNLS,M3 X .50,10MM	EA
0014369	SCREW,BHCS,STNLS,M4 X .70,10MM	EA
0014370	SCREW,BHCS,STNLS,M4 X .70,6MM	EA
0015311	SCREW,BHCS,STNLS,M4 X .70,8MM	EA

R
E

*

H

A

R

D

W

A

R

E

*

H

H

0014373	SCREW,BHCS,STNLS,M4 X 0.70 X 12	EA
0014372	SCREW,BHCS,STNLS,M5 X .80,10MM	EA
0014374	SCREW,BHCS,STNLS,M5 X .80,8MM	EA
0014376	SCREW,BHCS,STNLS,M6 X 1.0,10MM	EA
0014377	SCREW,BHCS,STNLS,M6 X 1.0,12MM	EA
0014378	SCREW,BHCS,STNLS,M6 X 1.0,16MM	EA
0014379	SCREW,BHCS,STNLS,M6 X 1.0,20MM	EA
0016327	SCREW,BHCS,STNLS,M8 X 1.25,12MM	EA

CUP POINT SET SCREWS



Part	Description	UOM
0008788	SCREW,CPSS,#10-24,1/4",STL	EA
0014515	SCREW,CPSS,0.25,0.50,STL,28TPI	EA
0014516	SCREW,CPSS,1/4"-28,1/4	EA
0014362	SCREW,CPSS,1/4"-28,3/16	EA
0014356	SCREW,CPSS,M10 X 1.5,20MM	EA
0014358	SCREW,CPSS,M10 X 1.5,40MM	EA
0014359	SCREW,CPSS,M10 X 1.5,50MM	EA
0014348	SCREW,CPSS,M16 X 2.0,30MM	EA
0014351	SCREW,CPSS,M4 X .70,20MM	EA
0014352	SCREW,CPSS,M6 X 1.0,30MM	EA
0014349	SCREW,CPSS,M6 X 1.0,40MM	EA
0014360	SCREW,CPSS,M6 X 1.0,45MM	EA
0014354	SCREW,CPSS,M6 X 1.0,6MM	EA
0016345	SCREW,CPSS,M8 X 1.25,50MM	EA
1-1680-1	SCREW,CPSS,M8-1.25,8MM,STL	EA

FLAT HEAD CAP SCREWS



Part	Description	UOM
0016608	SCREW,FHCS,#10-24,5/8",STL	EA
0016609	SCREW,FHCS,#4-40,1/4,STL	EA
0016349	SCREW,FHCS,#4-40,3/8,STL	EA
0014510	SCREW,FHCS,#6-32,1/2,STL	EA
Y070001	SCREW,FHCS,#8-32 X 3/4	EA
Y070042	SCREW,FHCS,1/2-13,0.75,GR 8	EA
Y070002	SCREW,FHCS,1/2-13X1.00 STAINLE	EA
Y070040	SCREW,FHCS,1/2-13X1.00,STEEL	EA
Y070044	SCREW,FHCS,1/2-13X1.50	EA
Y070004	SCREW,FHCS,1/2-13X1.50 STAINLESS STEEL	EA
Y070046	SCREW,FHCS,1/4-20,0.75,STN STL EMT462S-12	EA
EMT462-6	SCREW,FHCS,1/4-20X.25 STAINLESS STEEL	EA
Y070026	SCREW,FHCS,1/4-20X.38	EA
EMT462-8	SCREW,FHCS,1/4-20X.38	EA
Y070006	SCREW,FHCS,1/4-20X.50	EA
Y070014	SCREW,FHCS,1/4-20X.50 EMT462-8	EA
EMT462L-8	SCREW,FHCS,1/4-20X.50 STAINLESS,316	EA
EMT462L-10	SCREW,FHCS,1/4-20X.50,NYLOK	EA
Y070024	SCREW,FHCS,1/4-20X.63 NYLOK	EA
EMT462-12	SCREW,FHCS,1/4-20X.63,NYLOK FL STK,EMT462-10	EA
EMT462-12	SCREW,FHCS,1/4-20X.75	EA
EMT462-12	SCREW,FHCS,1/4-20X.75	EA
Y070033	SCREW,FHCS,1/4-20X.75	EA
Y070054	SCREW,FHCS,1/4-20X.75 STAINLESS STEEL	EA
EMT462-16	SCREW,FHCS,1/4-20X.88	EA
EMT462S-16	SCREW,FHCS,1/4-20X1.00	EA
Y070008	SCREW,FHCS,1/4-20X1.00 STAINLESS	EA
Y070049	SCREW,FHCS,1/4-20X1.25	EA
Y070013	SCREW,FHCS,1/4-20X1.50	EA
Y070035	SCREW,FHCS,10-24X.38	EA
Y070016	SCREW,FHCS,10-32X.38 STAINLESS STEEL	EA
Y070017	SCREW,FHCS,10-32X.38,STEEL EMT531-6	EA
Y070031	SCREW,FHCS,10-32X.50 EMT531-8	EA
EMT531-12	SCREW,FHCS,10-32X.63	EA
Y070066	SCREW,FHCS,10-32X.75	EA
0016140	SCREW,FHCS,10-32X.75	EA
0008786	SCREW,FHCS,10MM-1.5,40MM,STL	EA
Y070083	SCREW,FHCS,3.00,8.00,STL	EA
Y070052	SCREW,FHCS,3/8-16,0.63,STN STL	EA
Y070021	SCREW,FHCS,3/8-16,0.88,STN STL STAINLESS STEEL	EA
Y070039	SCREW,FHCS,3/8-16X.38 STAINLESS STEEL	EA
Y070025	SCREW,FHCS,3/8-16X.50 STAINLESS STEEL	EA
Y070023	SCREW,FHCS,3/8-16X.50,GD 8	EA
Y070027	SCREW,FHCS,3/8-16X.62,STEEL GRADE8	EA
Y070003	SCREW,FHCS,3/8-16X.75	EA
Y070010	SCREW,FHCS,3/8-16X.75 STAINLESS STEEL	EA
Y070009	SCREW,FHCS,3/8-16X.88,GRD.8	EA
Y070086	SCREW,FHCS,3/8-16X1.00	EA
Y070057	SCREW,FHCS,3/8-16X1.00 STAINLESS STEEL	EA

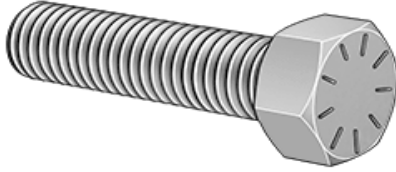
HARDWARE * HARDWARE

0016387	SCREW,FHCS,3/8-16X1.25,SS STAINLESS STEEL	EA
0017331	SCREW,FHCS,5/16"-18,2.5",STL	EA
Y070043	SCREW,FHCS,5/16-18,1.00,STNLS	EA
Y070012	SCREW,FHCS,5/16-18X.50	EA
EMT463-12	SCREW,FHCS,5/16-18X.63,GRD.8	EA
Y070058	SCREW,FHCS,5/16-18X.75 SAME AS 1-85	EA
EMT463-36	SCREW,FHCS,5/16-18X1.00	EA
EMT463-52	SCREW,FHCS,5/16-18X2.25	EA
0014111	SCREW,FHCS,5/16-18X3.25	EA
Y070059	SCREW,FHCS,5/16X18,3.50,STL	EA
Y070020	SCREW,FHCS,5/8-11X.75	EA
Y070050	SCREW,FHCS,5/8-11X1.25	EA
Y070028	SCREW,FHCS,5/8-11X1.50	EA
Y070063	SCREW,FHCS,5/8-11X1.50	EA
Y070055	SCREW,FHCS,5/8-11X1.75	EA
0017261	SCREW,FHCS,5/8-11X2.00	EA
1-3456-1	SCREW,FHCS,6.00,30.00	EA
EMT675-4	SCREW,FHCS,6-32X.204	EA
Y070037	SCREW,FHCS,6-32X.25 PLAIN CARBON	EA
Y070007	SCREW,FHCS,6-32X.25 STAINLESS STEEL	EA
Y070045	SCREW,FHCS,6-32X.38	EA
Y070041	SCREW,FHCS,6-32X.38 STAINLESS,GRADE8	EA
Y070032	SCREW,FHCS,8-32X.25	EA
Y070075	SCREW,FHCS,8-32X.38,STNLS STL	EA
Y070036	SCREW,FHCS,8-32X.50	EA
0015839	SCREW,FHCS,8-32X.50 STAINLESS STEEL	EA
0014296	SCREW,FHCS,8MM,8MM-18,1/2",STL,PHILLIPS	EA
0014297	SCREW,FHCS,M10 X 1.50,20MM	EA
Y070067	SCREW,FHCS,M10 X 1.50,35MM	EA
0008747	SCREW,FHCS,M10-1.5X30	EA
Y070073	SCREW,FHCS,M12,35.00,STL	EA
EMT674-10	SCREW,FHCS,M3X0.5X7	EA
EMT674-6	SCREW,FHCS,M3X5X10 MM LONG PLAIN CARBON	EA
0014283	SCREW,FHCS,M3X5X5.10 PLAIN CARBON	EA
0017236	SCREW,FHCS,M4 X .70,16MM	EA
0016552	SCREW,FHCS,M4,25mm,STEEL	EA
EMT721-15	SCREW,FHCS,M4-.7,12MM,STL	EA
0016351	SCREW,FHCS,M4-.7,15,STL	EA
EMT721-16	SCREW,FHCS,M4-.7,6MM,STL	EA
EMT721-10	SCREW,FHCS,M4X.07X16	EA
Y070077	SCREW,FHCS,M4X.7X10	EA
Y070069	SCREW,FHCS,M4X.7X8	EA
0014284	SCREW,FHCS,M4X10,SS	EA
0014285	SCREW,FHCS,M5 X .80,10MM	EA
0014286	SCREW,FHCS,M5 X .80,12MM	EA
Y070076	SCREW,FHCS,M5 X .80,16MM	EA
0014287	SCREW,FHCS,M5X8X10	EA
0014288	SCREW,FHCS,M6 X 1.0,12MM	EA
0014289	SCREW,FHCS,M6 X 1.0,14MM	EA
0014290	SCREW,FHCS,M6 X 1.0,16MM	EA
0014291	SCREW,FHCS,M6 X 1.0,40MM	EA
0016352	SCREW,FHCS,M6 X 1.0,70MM	EA
EMT688-25	SCREW,FHCS,M6-1.0,35MM,STL	EA
EMT688-20	SCREW,FHCS,M6X1.0X25	EA
Y070070	SCREW,FHCS,M6X20 *	EA
0014295	SCREW,FHCS,M6X20,SS	EA
0014292	SCREW,FHCS,M8 X 1.25,12MM	EA
0014293	SCREW,FHCS,M8 X 1.25,16MM	EA
0014294	SCREW,FHCS,M8 X 1.25,20MM	EA
0002094	SCREW,FHCS,M8 X 1.25,25MM	EA
Y070068	SCREW,FHCS,M8,16.00,STL METRIC M8-1.25X16MM	EA
1-1558	SCREW,FHCS,M8-1.25X30	EA
0014507	SCREW,FHCS,M8X1.25X18	EA
0014365	SCREW,FHCS,STNLS,#6-32 X 5/16	EA
0014366	SCREW,FHCS,STNLS,M3 X .50,8MM	EA
EMT676-4	SCREW,FHCS,STNLS,M4 X .70,6MM	EA

HEX HEAD CAP SCREWS

Part	Description	UOM
0015827	SCREW,HHCS,1/2",1/2"-6,3",STL,LAG	EA
0015828	SCREW,HHCS,1/2",1/2"-6,4",STL,LAG	EA
0015504	SCREW,HHCS,1/2",1/2"-6,6",STL,LAG	EA
0015506	SCREW,HHCS,1/2"-13,1",STL,ZINC FINISH	EA
0015505	SCREW,HHCS,1/2"-13,1-1/2",STL,ZINC FINISH	EA
0015507	SCREW,HHCS,1/2"-13,1-1/4",STL,ZINC FINISH	EA
EMT474-12	SCREW,HHCS,1/2"-13,2",STL,ZINC FINISH	EA
0015493	SCREW,HHCS,1/2-13X.75	EA
0015495	SCREW,HHCS,1/4"-20,1/2",STL	EA

R E * H A R D W A R E



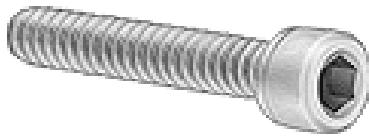
50094	SCREW,HHCS,1/4"-20,1-3/4",STL,ZINC FINISH	EA
Y075001	SCREW,HHCS,1/4-20 X 5/8,GRADE 8	EA
Y075002	SCREW,HHCS,1/4-20X.750 GRADE 8	EA
0014537	SCREW,HHCS,1/4-20X1.00	EA
0014535	SCREW,HHCS,1/4-28 X 1.0	EA
0014536	SCREW,HHCS,1/4-28 X 1/2	EA
0015850	SCREW,HHCS,1/4-28 X 3/4	EA
0014551	SCREW,HHCS,10MM,10MM-32,3/8",STL,SLOTTED HEAD	EA
0016376	SCREW,HHCS,3/4"-10 X 1.0	EA
0016218	SCREW,HHCS,3/4"-10,1.5",STL	EA
0016388	SCREW,HHCS,3/4"-16,2",STL	EA
Y075007	SCREW,HHCS,3/4"-16,2",STL	EA
0015499	SCREW,HHCS,3/4-16,2.00,STL	EA
0015496	SCREW,HHCS,3/8"-16,1",STL,ZINC FINISH	EA
0014542	SCREW,HHCS,3/8"-16,2-1/2",STL,ZINC FINISH	EA
0014543	SCREW,HHCS,3/8-16 X 1/2	EA
0014544	SCREW,HHCS,3/8-16 X 2 1/4	EA
EMT473-32	SCREW,HHCS,3/8-16 X 2 1/4	EA
0015829	SCREW,HHCS,3/8-16X2.00LG	EA
EMT472-12	SCREW,HHCS,5/16",5/16"-9,4",STL,LAG	EA
EMT472-10	SCREW,HHCS,5/16-18 X .75 LG	EA
EMT472-16	SCREW,HHCS,5/16-18 X 5/8	EA
EMT472-14	SCREW,HHCS,5/16-18,1,STL	EA
0014540	SCREW,HHCS,5/16-18X.88 LG	EA
0014541	SCREW,HHCS,5/16-24 X 1 1/2	EA
0014539	SCREW,HHCS,5/16-24 X 1 1/2	EA
0014538	SCREW,HHCS,5/16-24 X 1 1/4	EA
0015568	SCREW,HHCS,5/16-24 X 1.0	EA
0015570	SCREW,HHCS,6MM-1.0,20MM,STL,	EA
0014630	SCREW,HHCS,6MM-1.0,30MM,STL,	EA
0014631	SCREW,HHCS,M10 X 1.5,25MM	EA
0014632	SCREW,HHCS,M10 X 1.5,35MM	EA
0014633	SCREW,HHCS,M10 X 1.5,80MM	EA
0014634	SCREW,HHCS,M12 X 1.75,35MM	EA
0014635	SCREW,HHCS,M12 X 1.75,40MM	EA
0000426	SCREW,HHCS,M12 X 1.75,60MM	EA
0014636	SCREW,HHCS,M12-1.75,40.00,STL	EA
0014637	SCREW,HHCS,M16 X 2.0,50MM	EA
Y075006	SCREW,HHCS,M16 X 2.0,75MM	EA
0014638	SCREW,HHCS,M16 X 40MM LONG	EA
0017337	SCREW,HHCS,M20 X 2.5,75MM	EA
0010763	SCREW,HHCS,M4,8.00,8.8,DIN933	EA
0014623	SCREW,HHCS,M5,25.00	EA
0014622	SCREW,HHCS,M6 X 1.0,120MM	EA
0015058	SCREW,HHCS,M6 X 1.0,35MM	EA
0016658	SCREW,HHCS,M6 X 1.00,30MM,10.9	EA
0014624	SCREW,HHCS,M6-1,20MM,STL	EA
0014625	SCREW,HHCS,M8 X 1.25,25MM	EA
0014626	SCREW,HHCS,M8 X 1.25,30MM	EA
0014627	SCREW,HHCS,M8 X 1.25,30MM	EA
0014628	SCREW,HHCS,M8 X 1.25,30MM	EA
EMT705-22	SCREW,HHCS,M8 X 1.25,30MM	EA
0014185	SCREW,HHCS,M8X1.25,22MM LG	EA
P-1887	SCREW,HHCS,M8X1.25,90.00,STL	EA

SOCKET HEAD CAP SCREWS

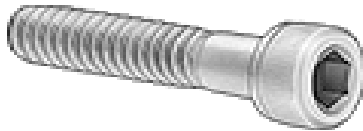
Part	Description	UOM
0014566	SCREW,SHCS,#10-24,2",STL	EA
0014565	SCREW,SHCS,#10-32 X 1-1/2	EA
EMT681-8	SCREW,SHCS,#10-32 X 1-1/4"	EA
0016338	SCREW,SHCS,#4-40,1/2",STL	EA
0016339	SCREW,SHCS,#6-32,1",STL	EA
0016337	SCREW,SHCS,#6-32,1.75",STL	EA
0016340	SCREW,SHCS,#6-32,3/8",STL	EA
0016341	SCREW,SHCS,#8-32,1.5",STL	EA
0008754	SCREW,SHCS,#8-33,2.25",STL	EA
0008721	SCREW,SHCS,0.31-18,0.75,STL	EA
0014575	SCREW,SHCS,0.31-18,1.50,STL	EA
0016308	SCREW,SHCS,1/2"-13 X 5"	EA
0016310	SCREW,SHCS,1/2"-13,2.5",STL	EA
0016359	SCREW,SHCS,1/2"-13,3.5",STL	EA
0016418	SCREW,SHCS,1/2"-13,4",STL	EA
0016305	SCREW,SHCS,1/2"-13,4.25",STL	EA
Y071099	SCREW,SHCS,1/2"-13,5/8",STL	EA
0005161	SCREW,SHCS,1/2-13 X 1.0 STAINLESS	EA
Y071082	SCREW,SHCS,1/2-13,1.50,STL STAINLESS	EA
Y071104	SCREW,SHCS,1/2-13,2.00,STL	EA
Y071095	SCREW,SHCS,1/2-13,2.75	EA

H A

A R D W A R E * H A R D W A R



Full Threads



Partial Threads

Y071095	SCREW,SHCS,1/2-13X 1.750	EA
Y071032	SCREW,SHCS,1/2-13X 1.750	EA
Y071034	SCREW,SHCS,1/2-13X.75	EA
Y071042	SCREW,SHCS,1/2-13X.75	EA
Y071038	SCREW,SHCS,1/2-13X.75 LOW HEAD	EA
Y071037	SCREW,SHCS,1/2-13X1.00	EA
Y071050	SCREW,SHCS,1/2-13X1.00 LOW PROFILE	EA
Y071019	SCREW,SHCS,1/2-13X1.00 LOW PROFILE(STANDARD)	EA
EMT456-24	SCREW,SHCS,1/2-13X1.25	EA
Y071061	SCREW,SHCS,1/2-13X1.50	EA
Y071007	SCREW,SHCS,1/2-13X1.50	EA
EMT456-32	SCREW,SHCS,1/2-13X1.63	EA
EMT456-72	SCREW,SHCS,1/2-13X2.00	EA
0014570	SCREW,SHCS,1/2-13X4.50	EA
0014571	SCREW,SHCS,1/4"-20 X 2"	EA
0016343	SCREW,SHCS,1/4"-20 X 4-1/2"	EA
0016344	SCREW,SHCS,1/4"-20,3",STL	EA
0015529	SCREW,SHCS,1/4"-20,3.75",STL	EA
0014572	SCREW,SHCS,1/4"-20,7/8",STL,BLACK OXIDE	EA
Y071097	SCREW,SHCS,1/4"-28 X 3/4"	EA
EMT453-28	SCREW,SHCS,1/4-20 X 1.25,S.S.	EA
EMT453-56	SCREW,SHCS,1/4-20 X 1.75	EA
Y071002	SCREW,SHCS,1/4-20 X 3.50	EA
Y071006	SCREW,SHCS,1/4-20X.38	EA
EMT453-8	SCREW,SHCS,1/4-20X.38 NON STANDARD	EA
EMT453-8	SCREW,SHCS,1/4-20X.50	EA
EMT453S-8	SCREW,SHCS,1/4-20X.50	EA
Y071045	SCREW,SHCS,1/4-20X.50 STAINLESS	EA
EMT453-10	SCREW,SHCS,1/4-20X.62 STAINLESS STEEL	EA
Y071054	SCREW,SHCS,1/4-20X.63	EA
Y071039	SCREW,SHCS,1/4-20X.63	EA
Y071026	SCREW,SHCS,1/4-20X.63 LOW PROFILE	EA
Y071014	SCREW,SHCS,1/4-20X.75 STAINLESS STEEL	EA
Y071014	SCREW,SHCS,1/4-20X.750 GRADE 8	EA
EMT453-16	SCREW,SHCS,1/4-20X.750 GRADE 8	EA
EMT453L-16	SCREW,SHCS,1/4-20X1.00	EA
EMT453-18	SCREW,SHCS,1/4-20X1.00,NYLOK	EA
EMT453-20	SCREW,SHCS,1/4-20X1.12	EA
EMT453-24	SCREW,SHCS,1/4-20X1.25	EA
Y071069	SCREW,SHCS,1/4-20X1.50	EA
EMT453-36	SCREW,SHCS,1/4-20X1.50	EA
EMT453-40	SCREW,SHCS,1/4-20X2.25	EA
EMT453-32	SCREW,SHCS,1/4-20X2.50	EA
EMT453-80	SCREW,SHCS,1/4-20X2.OO	EA
Y071085	SCREW,SHCS,1/4-20X5.00	EA
EMT458-16	SCREW,SHCS,1/4-28 UNF-2AX1.25	EA
EMT458-24	SCREW,SHCS,1/4-28 X 1.00 LG	EA
0008893	SCREW,SHCS,1/4-28 X 1.50 LG	EA
EMT458L-8	SCREW,SHCS,1/4-28,0.75,STNLS	EA
EMT458-6	SCREW,SHCS,1/4-28,1/2,STL NYLON PATCH	EA
EMT452-6	SCREW,SHCS,1/4-28X.38	EA
EMT452-8	SCREW,SHCS,10-24X.38	EA
EMT452S-8	SCREW,SHCS,10-24X.50	EA
Y071005	SCREW,SHCS,10-24X.50 STAINLESS STEEL	EA
EMT452-12	SCREW,SHCS,10-24X.500	EA
EMT457S-12	SCREW,SHCS,10-24X.75	EA
EMT452-16	SCREW,SHCS,10-24X.75 STAINLESS	EA
EMT452-28	SCREW,SHCS,10-24X1.00	EA
Y071098	SCREW,SHCS,10-24X1.75	EA
EMT457-4	SCREW,SHCS,10-32 X .5	EA
EMT457L-4	SCREW,SHCS,10-32X.25	EA
EMT457-6	SCREW,SHCS,10-32X.25,W/NYLOCK	EA
Y071020	SCREW,SHCS,10-32X.38	EA
EMT457L-6	SCREW,SHCS,10-32X.38	EA
EMT457-8	SCREW,SHCS,10-32X.38,NYLOK	EA
EMT457-8	SCREW,SHCS,10-32X.50	EA
EMT457-8	SCREW,SHCS,10-32X.50	EA
EMT457L-8	SCREW,SHCS,10-32X.50	EA
P-3148	SCREW,SHCS,10-32X.50,NYLOK	EA
EMT457S-8	SCREW,SHCS,10-32X.50,SPEC. LOW PROFILE HEAD	EA
EMT457-10	SCREW,SHCS,10-32X.50,STAINLESS	EA
EMT457L-10	SCREW,SHCS,10-32X.63	EA
1-4400-1	SCREW,SHCS,10-32X.63,NYLOK	EA
EMT457-12	SCREW,SHCS,10-32X.63,W/NYLOC	EA
Y071046	SCREW,SHCS,10-32X.75	EA
Y071046	SCREW,SHCS,10-32X.75	EA
Y071052	SCREW,SHCS,10-32X.75	EA

E*******H
A
R
D
W
A
R
E*********H
A**

EMT457L-12	SCREW,SHCS,10-32X.75	EA
EMT457-14	SCREW,SHCS,10-32X.75,NYLOK	EA
EMT457-16	SCREW,SHCS,10-32X.88	EA
Y071040	SCREW,SHCS,10-32X1.00	EA
Y071040	SCREW,SHCS,10-32X1.00	EA
EMT457L-16	SCREW,SHCS,10-32X1.00	EA
EMT457-20	SCREW,SHCS,10-32X1.00,NYLOK	EA
Y071041	SCREW,SHCS,10-32X1.25	EA
EMT457-40	SCREW,SHCS,10-32X1.75	EA
0015549	SCREW,SHCS,10-32X2.50	EA
0015553	SCREW,SHCS,10MM-1.5,120MM,STL	EA
0015554	SCREW,SHCS,10MM-1.5,25MM,STL,BLACK OXIDE	EA
0015572	SCREW,SHCS,10MM-1.5,45MM,STL,BLACK OXIDE	EA
0015559	SCREW,SHCS,10MM-25,25MM,STL,BLACK OXIDE	EA
0015557	SCREW,SHCS,12MM-1.75,60MM,STL,BLACK OXIDE	EA
0015560	SCREW,SHCS,16MM-2.0,30MM,STL,BLACK OXIDE	EA
0008782	SCREW,SHCS,16MM-2.0,40MM,STL,BLACK OXIDE	EA
Y071089	SCREW,SHCS,3.00,35.00,STL	EA
0016303	SCREW,SHCS,3/4-10 X 1.50 LG	EA
0015571	SCREW,SHCS,3/8"-16,2.75",STL	EA
0014574	SCREW,SHCS,3/8"-16,7/8",STL,BLACK OXIDE	EA
EMT455-36	SCREW,SHCS,3/8"-24 X 1-3/4"	EA
Y071015	SCREW,SHCS,3/8-16,2.25,STL	EA
Y071018	SCREW,SHCS,3/8-16X.50	EA
50160	SCREW,SHCS,3/8-16X.50 EMT FLOOR STOCK,EMT455-8	EA
Y071027	SCREW,SHCS,3/8-16X.75	EA
Y071001	SCREW,SHCS,3/8-16X.75	EA
EMT455-15	SCREW,SHCS,3/8-16X.75 GRADE 8	EA
0017332	SCREW,SHCS,3/8-16X.93	EA
EMT455-16	SCREW,SHCS,3/8-16X1,STNLS	EA
Y071011	SCREW,SHCS,3/8-16X1.00	EA
Y071012	SCREW,SHCS,3/8-16X1.00	EA
EMT455-24	SCREW,SHCS,3/8-16X1.250	EA
Y071004	SCREW,SHCS,3/8-16X1.50	EA
Y071025	SCREW,SHCS,3/8-16X1.50	EA
EMT455-28	SCREW,SHCS,3/8-16X1.50,SS STAINLESS STEEL	EA
EMT455S-28	SCREW,SHCS,3/8-16X1.75	EA
EMT455-32	SCREW,SHCS,3/8-16X1.75 STAINLESS STEEL	EA
Y071036	SCREW,SHCS,3/8-16X2.00	EA
Y071059	SCREW,SHCS,3/8-16X2.00,GRADE8	EA
Y071080	SCREW,SHCS,3/8-16X2.00,S.S.	EA
Y071080	SCREW,SHCS,3/8-16X2.500	EA
Y071058	SCREW,SHCS,3/8-16X2.500	EA
EMT455-64	SCREW,SHCS,3/8-16X4.00	EA
EMT460-28	SCREW,SHCS,3/8-16X4.00 1.25 MIN THD LENGTH	EA
0015531	SCREW,SHCS,3/8-24X1.75	EA
0015532	SCREW,SHCS,3MM-0.5,12MM,STL,BLACK OXIDE	EA
0015975	SCREW,SHCS,3MM-0.5,45MM,STL,BLACK OXIDE	EA
EMT681-10	SCREW,SHCS,3MM-0.5,5MM,STL	EA
EMT681-14	SCREW,SHCS,4-40X.63	EA
0015530	SCREW,SHCS,4-40X.88	EA
Y071092	SCREW,SHCS,4MM-0.7,16MM,STL,BLACK OXIDE	EA
Y071100	SCREW,SHCS,5/16-18 X .62	EA
Y071087	SCREW,SHCS,5/16-18 X 1.75 STAINLESS	EA
Y071055	SCREW,SHCS,5/16-18 X 2.000 GRADE 8	EA
EMT454-28	SCREW,SHCS,5/16-18,.75,LOW,STL	EA
EMT454-8	SCREW,SHCS,5/16-18,1.75	EA
Y071029	SCREW,SHCS,5/16-18X.50	EA
EMT454-14	SCREW,SHCS,5/16-18X.75	EA
EMT454-16	SCREW,SHCS,5/16-18X.88	EA
Y071010	SCREW,SHCS,5/16-18X1.00	EA
Y071033	SCREW,SHCS,5/16-18X1.00	EA
Y071003	SCREW,SHCS,5/16-18X1.00 STAINLESS	EA
Y071023	SCREW,SHCS,5/16-18X1.25	EA
P-3961	SCREW,SHCS,5/16-18X1.38	EA
EMT454-24	SCREW,SHCS,5/16-18X1.5,FULLTHD	EA
Y071035	SCREW,SHCS,5/16-18X1.50	EA
EMT454S-28	SCREW,SHCS,5/16-18X1.50	EA
Y071091	SCREW,SHCS,5/16-18X1.75 STAINLESS STEEL	EA
EMT454-36	SCREW,SHCS,5/16-18X1.750, STEEL	EA
0016311	SCREW,SHCS,5/16-18X2.25 LG	EA
Y071022	SCREW,SHCS,5/8"-11,1.25",STL	EA
0015533	SCREW,SHCS,5/8-11X1.50	EA
0015538	SCREW,SHCS,5MM-0.8,18MM,STL,BLACK OXIDE	EA
0010059	SCREW,SHCS,5MM-0.8,30MM,STL,BLACK OXIDE	EA
emt450-4	SCREW,SHCS,6-32,0.63	EA
EMT450-8	SCREW,SHCS,6-32,1/4",STL	EA

R D W A R E * H A R D W A R E

1-3281	SCREW,SHCS,6-32X.50	EA
Y071088	SCREW,SHCS,6-32X.50 .190 TURNED HEAD	EA
EMT450-12	SCREW,SHCS,6-32X.500	EA
0016207	SCREW,SHCS,6-32X.75	EA
0016087	SCREW,SHCS,6MM-1,40MM,STL	EA
Y071106	SCREW,SHCS,6MM-1,60MM,STL	EA
0008576	SCREW,SHCS,7/16-14 x 2.0 LG	EA
Y071048	SCREW,SHCS,7/16-14UNC,2.50,RH	EA
Y071047	SCREW,SHCS,7/16-14X1.25	EA
0003525	SCREW,SHCS,7/16-14X1.50	EA
EMT451L-6	SCREW,SHCS,7/16-20,1.25,STL	EA
Y071096	SCREW,SHCS,8-32 X .38,NYLOK	EA
EMT451-4	SCREW,SHCS,8-32 X .500 LG,S.S.	EA
EMT451-6	SCREW,SHCS,8-32X.25	EA
Y071016	SCREW,SHCS,8-32X.38	EA
Y071049	SCREW,SHCS,8-32X.50	EA
EMT451L-10	SCREW,SHCS,8-32X.63	EA
Y071053	SCREW,SHCS,8-32X.63,NYLOK	EA
Y071065	SCREW,SHCS,8-32X.75	EA
0015547	SCREW,SHCS,8-32X1.00	EA
0015551	SCREW,SHCS,8MM-1.25,80MM,STL	EA
EMT640-60	SCREW,SHCS,8MM-1.25,90MM,STL,BLACK OXIDE	EA
0014439	SCREW,SHCS,HEX	EA
0014428	SCREW,SHCS,M10 X 1.5,100MM	EA
0014429	SCREW,SHCS,M10 X 1.5,12MM	EA
0014430	SCREW,SHCS,M10 X 1.5,16MM	EA
0008740	SCREW,SHCS,M10 X 1.5,20MM	EA
0014432	SCREW,SHCS,M10 X 1.5,35.00,STL	EA
0014433	SCREW,SHCS,M10 X 1.5,40MM	EA
0014434	SCREW,SHCS,M10 X 1.5,50MM	EA
0008741	SCREW,SHCS,M10 X 1.5,55MM	EA
0014435	SCREW,SHCS,M10 X 1.5,60.00,STL	EA
0014436	SCREW,SHCS,M10 X 1.5,60MM	EA
0014437	SCREW,SHCS,M10 X 1.5,70MM	EA
0014438	SCREW,SHCS,M10 X 1.5,80MM	EA
0007992	SCREW,SHCS,M10 X 1.5,90MM	EA
0017312	SCREW,SHCS,M10,120.00,STL	EA
Y071105	SCREW,SHCS,M10,30.00,STNLS	EA
Y071044	SCREW,SHCS,M10,50.00,STL	EA
P-4270	SCREW,SHCS,M10X1.50	EA
EMT640-45	SCREW,SHCS,M10X1.50X30MM LG	EA
EMT640-16	SCREW,SHCS,M10X1.5X1.77 39622	EA
Y071064	SCREW,SHCS,M10X1.5X16MM	EA
EMT640-20	SCREW,SHCS,M10X1.5X60	EA
EMT640-25	SCREW,SHCS,M10X20	EA
EMT640-50	SCREW,SHCS,M10X25	EA
0014456	SCREW,SHCS,M10X50	EA
0014457	SCREW,SHCS,M12 X 1.75,110MM	EA
0014458	SCREW,SHCS,M12 X 1.75,120MM	EA
0014459	SCREW,SHCS,M12 X 1.75,130MM	EA
0014440	SCREW,SHCS,M12 X 1.75,140MM	EA
0014441	SCREW,SHCS,M12 X 1.75,16MM	EA
0008742	SCREW,SHCS,M12 X 1.75,20MM	EA
0008711	SCREW,SHCS,M12 X 1.75,25.00,ST	EA
0014443	SCREW,SHCS,M12 X 1.75,30.00	EA
0008712	SCREW,SHCS,M12 X 1.75,30MM	EA
0014444	SCREW,SHCS,M12 X 1.75,35.00	EA
0008744	SCREW,SHCS,M12 X 1.75,35MM	EA
0014445	SCREW,SHCS,M12 X 1.75,40.00,STL	EA
0014446	SCREW,SHCS,M12 X 1.75,40MM	EA
0014447	SCREW,SHCS,M12 X 1.75,45MM	EA
0014448	SCREW,SHCS,M12 X 1.75,50MM	EA
0014450	SCREW,SHCS,M12 X 1.75,55MM	EA
0014451	SCREW,SHCS,M12 X 1.75,60MM	EA
0014452	SCREW,SHCS,M12 X 1.75,65MM	EA
0014453	SCREW,SHCS,M12 X 1.75,70MM	EA
0014454	SCREW,SHCS,M12 X 1.75,80MM	EA
0008713	SCREW,SHCS,M12 X 1.75,90MM	EA
0008743	SCREW,SHCS,M12,35.00,STL	EA
Y071079	SCREW,SHCS,M12,35.00,STL	EA
0016656	SCREW,SHCS,M12-1.75 X 20MM	EA
P-4279	SCREW,SHCS,M12-1.75,150	EA
0014468	SCREW,SHCS,M12X1.75X45MM LG	EA
0014460	SCREW,SHCS,M16 X 2.0,130MM	EA
0008714	SCREW,SHCS,M16 X 2.0,30MM	EA
0014461	SCREW,SHCS,M16 X 2.0,35.00	EA
0014462	SCREW,SHCS,M16 X 2.0,35MM	EA

* H A R D W A R E * H A D

0014463	SCREW,SHCS,M16 X 2.0,45MM	EA
0014464	SCREW,SHCS,M16 X 2.0,50MM	EA
0014465	SCREW,SHCS,M16 X 2.0,55MM	EA
0014466	SCREW,SHCS,M16 X 2.0,60MM	EA
0014467	SCREW,SHCS,M16 X 2.0,70MM	EA
0016235	SCREW,SHCS,M16 X 2.0,90MM	EA
0016086	SCREW,SHCS,M2 X .40,12MM	EA
0010332	SCREW,SHCS,M2.5,12.00,STL	EA
0014469	SCREW,SHCS,M2.5,16.00,STL,BLK	EA
0014470	SCREW,SHCS,M20 X 2.5,50MM	EA
EMT589-8	SCREW,SHCS,M20 X 2.5,60MM	EA
0014390	SCREW,SHCS,M2X8	EA
0012128	SCREW,SHCS,M3 X .50,5MM	EA
0014870	SCREW,SHCS,M3 X 0.5,10.00,STL	EA
0013329	SCREW,SHCS,M3 X 0.5,16MM	EA
0008724	SCREW,SHCS,M3 X 0.5,25.00,STL	EA
0005226	SCREW,SHCS,M3,16.00,STL	EA
0017306	SCREW,SHCS,M3,25.00,STNSTL	EA
0005252	SCREW,SHCS,M3,30.00,STNLS	EA
0016657	SCREW,SHCS,M3,6.00,STNSTL	EA
0016551	SCREW,SHCS,M3-.5,10MM,STNLS	EA
EMT590-16	SCREW,SHCS,M3-.5,15MM,STL	EA
EMT590-40	SCREW,SHCS,M3X.5X16	EA
P-4317	SCREW,SHCS,M3X.5X40	EA
EMT590-8	SCREW,SHCS,M3X0.5X8MM LG	EA
0014394	SCREW,SHCS,M3X8	EA
0014395	SCREW,SHCS,M4 X .70,14MM	EA
0014398	SCREW,SHCS,M4 X .70,18MM	EA
0014391	SCREW,SHCS,M4 X .70,45MM	EA
0014392	SCREW,SHCS,M4 X .70,6MM	EA
0008725	SCREW,SHCS,M4 X .70,8MM	EA
0008726	SCREW,SHCS,M4 X 0.7,14.00,STL	EA
emt680-35	SCREW,SHCS,M4 X 0.7,8.00,STL	EA
0005255	SCREW,SHCS,M4 X 35MM LG	EA
0008729	SCREW,SHCS,M4,18.00,STNSTL	EA
0005253	SCREW,SHCS,M4,50.00,STL	EA
EMT680-5	SCREW,SHCS,M4,8.00,STNSTL	EA
EMT680-10	SCREW,SHCS,M4-.7,5,STL	EA
P-4309	SCREW,SHCS,M4X.7X10 *LOW PROFILE	EA
EMT680-12	SCREW,SHCS,M4X.7X10MM LG	EA
EMT680-16	SCREW,SHCS,M4X.7X12	EA
EMT680-20	SCREW,SHCS,M4X.7X16	EA
P-3733	SCREW,SHCS,M4X.7X20	EA
EMT680-25	SCREW,SHCS,M4X20	EA
EMT680-30	SCREW,SHCS,M4X25	EA
0014402	SCREW,SHCS,M4X30	EA
0014403	SCREW,SHCS,M5 X .80,14MM	EA
0014404	SCREW,SHCS,M5 X .80,35MM	EA
0014405	SCREW,SHCS,M5 X .80,40MM	EA
0014400	SCREW,SHCS,M5 X .80,45MM	EA
0008731	SCREW,SHCS,M5 X .80,8MM	EA
0008730	SCREW,SHCS,M5 X 0.8,12.00,STL	EA
0014048	SCREW,SHCS,M5 X 0.8,14.00,STL	EA
0017298	SCREW,SHCS,M5 X 0.8,14.00,STNLS	EA
EMT683-10	SCREW,SHCS,M5,30.00,STNLS	EA
EMT683L-10	SCREW,SHCS,M5X.8X10	EA
EMT683-14	SCREW,SHCS,M5X.8X10 NYLOC PATCH	EA
EMT683-16	SCREW,SHCS,M5X.8X14 *	EA
1-4400-2	SCREW,SHCS,M5X.8X16	EA
EMT683-20	SCREW,SHCS,M5X.8X16,W/NYLOC	EA
EMT683-25	SCREW,SHCS,M5X.8X20	EA
EMT683-35	SCREW,SHCS,M5X.8X25	EA
EMT683-40	SCREW,SHCS,M5X.8X35	EA
EMT683-8	SCREW,SHCS,M5X.8X40 FLOOR STOCK	EA
0002533	SCREW,SHCS,M5X.8X8	EA
0002533	SCREW,SHCS,M5X0.8X25MM,LW HD	EA
1-3115	SCREW,SHCS,M5X0.8X25MM,LW HD	EA
P-3738	SCREW,SHCS,M5X12	EA
P-3737	SCREW,SHCS,M5X12,GRADE 12.9	EA
Y071073	SCREW,SHCS,M5X16,GRADE 12.9	EA
EMT683-50	SCREW,SHCS,M5X8.0,20MM LG	EA
0014873	SCREW,SHCS,M5X8X50	EA
0008736	SCREW,SHCS,M6 X 1.0,12MM,STNLS	EA
0008737	SCREW,SHCS,M6 X 1.0,25.00,STL	EA
0014407	SCREW,SHCS,M6 X 1.0,30.00,STL	EA
0014408	SCREW,SHCS,M6 X 1.0,30MM	EA
0008755	SCREW,SHCS,M6 X 1.0,35MM	EA

HARDWARE * HARDWARE

0014409	SCREW,SHCS,M6 X 1.0,40.00,STL	EA
0014410	SCREW,SHCS,M6 X 1.0,40MM	EA
0014411	SCREW,SHCS,M6 X 1.0,45MM	EA
0014412	SCREW,SHCS,M6 X 1.0,50MM	EA
0017238	SCREW,SHCS,M6 X 1.0,55MM	EA
0008733	SCREW,SHCS,M6,1.0,45mm,STEEL	EA
0005246	SCREW,SHCS,M6,12.00,STL	EA
0013504	SCREW,SHCS,M6,12.00,STNLS	EA
0008734	SCREW,SHCS,M6,14.00,STL	EA
0008735	SCREW,SHCS,M6,16.00,STL	EA
0005450	SCREW,SHCS,M6,20.00,STL	EA
0011403	SCREW,SHCS,M6,40.00,STL	EA
0017296	SCREW,SHCS,M6,45.00,STNLS,FULL THD	EA
EMT655-16	SCREW,SHCS,M6,65.00,STL	EA
P-4281	SCREW,SHCS,M6X1 X 16MM	EA
EMT655-12	SCREW,SHCS,M6X1.00,16.00,STL	EA
EMT655-10	SCREW,SHCS,M6X1.0X.47 39565	EA
P-4347	SCREW,SHCS,M6X1.0X10	EA
Y071074	SCREW,SHCS,M6X1.0X20MM LG.	EA
P-3739	SCREW,SHCS,M6X1.0X30	EA
P-4306	SCREW,SHCS,M6X16,GRADE 12.9	EA
EMT655-25	SCREW,SHCS,M6X1X16MM LG	EA
EMT655-35	SCREW,SHCS,M6X25	EA
Y071068	SCREW,SHCS,M6X35 MM LG	EA
0014427	SCREW,SHCS,M6X60,SS	EA
0008708	SCREW,SHCS,M8 X 1.25,100MM	EA
0014413	SCREW,SHCS,M8 X 1.25,12.00	EA
0014414	SCREW,SHCS,M8 X 1.25,12MM	EA
0014415	SCREW,SHCS,M8 X 1.25,14MM	EA
0014416	SCREW,SHCS,M8 X 1.25,16MM	EA
0008709	SCREW,SHCS,M8 X 1.25,20MM	EA
0008738	SCREW,SHCS,M8 X 1.25,25.00	EA
0014417	SCREW,SHCS,M8 X 1.25,35.00,STL	EA
0014419	SCREW,SHCS,M8 X 1.25,35MM	EA
0014420	SCREW,SHCS,M8 X 1.25,45MM	EA
0014421	SCREW,SHCS,M8 X 1.25,50MM	EA
0014422	SCREW,SHCS,M8 X 1.25,50MM	EA
0014423	SCREW,SHCS,M8 X 1.25,55MM	EA
0014424	SCREW,SHCS,M8 X 1.25,60MM	EA
0014425	SCREW,SHCS,M8 X 1.25,65MM	EA
0014426	SCREW,SHCS,M8 X 1.25,80MM	EA
0017237	SCREW,SHCS,M8 X 1.25,85MM	EA
Y071078	SCREW,SHCS,M8,1.25,70mm,STEEL	EA
Y071081	SCREW,SHCS,M8-1.25X20MM	EA
Y071066	SCREW,SHCS,M-8-1.25X25MM	EA
Y071030	SCREW,SHCS,M8X1.0X30	EA
EMT654-25	SCREW,SHCS,M8X1.25	EA
EMT654-12	SCREW,SHCS,M8X1.25,25.00,STL	EA
Y071063	SCREW,SHCS,M8X1.25X12	EA
EMT654-35	SCREW,SHCS,M8X1.25X30	EA
EMT654-40	SCREW,SHCS,M8X1.25X35	EA
Y071067	SCREW,SHCS,M8X1.25X40	EA
EMT654-90	SCREW,SHCS,M8X1.25X55	EA
0014367	SCREW,SHCS,M8X1.25X90MM LG	EA
EMT709-6	SCREW,SHCS,STNLS,M5 X .80,14MM	EA
EMT709-8	SCREW,SHCSLP,10X24X.38 LOW PROFILE	EA
EMT710-10	SCREW,SHCSLP,10X24X.50 LOW PROFILE	EA
EMT710-12	SCREW,SHCSLP,M4X.07X10 LOW PROFILE	EA
EMT725-12	SCREW,SHCSLP,M4X.7X12 LOW PROFILE	EA

STAINLESS SET SCREWS

Part	Description	UOM
EMT668-6	SCREW,SSS,#10-32,1/2,STL NYLON PATCH	EA
0016611	SCREW,SSS,#6-32,3/8,STL	EA
0016363	SCREW,SSS,#8-32,5/16,STL	EA
0016362	SCREW,SSS,1/2"-13,3",STL	EA
Y072025	SCREW,SSS,1/2"-13,3/8",STL	EA
Y072021	SCREW,SSS,1/2-13X.50	EA
EMT719-16	SCREW,SSS,1/2-13X.75	EA
Y072022	SCREW,SSS,1/2-13X1.00	EA
0016360	SCREW,SSS,1/2-13X1.50	EA
Y074104	SCREW,SSS,1/4"-28,1/4",STL	EA
Y072008	SCREW,SSS,1/4-20 X .38DOG POIN STAINLESS STEEL	EA
EMT444-4	SCREW,SSS,1/4-20X.19	EA
Y072018	SCREW,SSS,1/4-20X.25	EA
EMT444-6	SCREW,SSS,1/4-20X.25	EA
1-872	SCREW,SSS,1/4-20X.38	EA
Y072015	SCREW,SSS,1/4-20X.38,BRASSTIP	EA

*
H
A
R
D
W
A
R
E
*
H
A
R

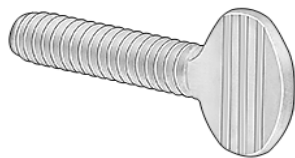


EMT444L-6	SCREW,SSS,1/4-20X.38,GRADE8 EMT444-6	EA
EMT444-6N	SCREW,SSS,1/4-20X.38,NYLOK	EA
Y072005	SCREW,SSS,1/4-20X.38,NYLONTIP	EA
Y072029	SCREW,SSS,1/4-20X.50	EA
EMT315	SCREW,SSS,1/4-20X.50 STAINLESS STEEL	EA
Y072017	SCREW,SSS,1/4-20X.50,BRASSTIP	EA
Y072013	SCREW,SSS,1/4-20X.50,NYLOK	EA
EMT444-12	SCREW,SSS,1/4-20X.63	EA
EMT444L-12	SCREW,SSS,1/4-20X.75	EA
Y072016	SCREW,SSS,1/4-20X.75,NYLOK	EA
EMT444-16	SCREW,SSS,1/4-20X.88	EA
Y072032	SCREW,SSS,1/4-20X1.00	EA
EMT447-24	SCREW,SSS,1/4-20X1.50	EA
0017330	SCREW,SSS,1/4-28	EA
EMT447L-6	SCREW,SSS,1/4-28 X 0.38 LG,STNLS	EA
EMT447L-12	SCREW,SSS,1/4-28,0.38,STL	EA
EMT447-3	SCREW,SSS,1/4-28,0.75	EA
EMT447L-4	SCREW,SSS,1/4-28X.187 CUP POINT	EA
EMT447-6	SCREW,SSS,1/4-28X.25,NYLOK	EA
EMT447-6N	SCREW,SSS,1/4-28X.38	EA
EMT447-8	SCREW,SSS,1/4-28X.38,NYLON TIP	EA
Y072006	SCREW,SSS,1/4-28X.50	EA
EMT447-10	SCREW,SSS,1/4-28X.50	EA
EMT447L-10	SCREW,SSS,1/4-28X.62	EA
EMT447-12	SCREW,SSS,1/4-28X.63,NYLOK	EA
EMT447-16	SCREW,SSS,1/4-28X.75	EA
Y072042	SCREW,SSS,1/4-28X1.00	EA
EMT443-4	SCREW,SSS,10-24 X 1.000	EA
Y072020	SCREW,SSS,10-32X.25	EA
Y072036	SCREW,SSS,10-32X.25 EMT443-4	EA
EMT443-6	SCREW,SSS,10-32X.25 W/NYLON PATCH	EA
EMT443L-6	SCREW,SSS,10-32X.38	EA
EMT443-8	SCREW,SSS,10-32X.38,NYLOK	EA
EMT443-10	SCREW,SSS,10-32X.50	EA
EMT443-12	SCREW,SSS,10-32X.63	EA
EMT443-24	SCREW,SSS,10-32X.75	EA
Y072010	SCREW,SSS,10-32X1.50	EA
0015508	SCREW,SSS,10-32X3/16"	EA
EMT747-32	SCREW,SSS,10MM-1.5,10MM,STL,BRASS TIP	EA
0016361	SCREW,SSS,3/4-10X2.00	EA
0016461	SCREW,SSS,3/8"-24,1.5", STL	EA
EMT446-4	SCREW,SSS,3/8"-24,2.25",STL	EA
Y072019	SCREW,SSS,3/8-16,1/4,STL	EA
EMT446B-6	SCREW,SSS,3/8-16X.38	EA
Y073001	SCREW,SSS,3/8-16X.38,BRASS TIP	EA
EMT446B-8	SCREW,SSS,3/8-16X.498	EA
Y072002	SCREW,SSS,3/8-16X.50,BRASSTIP	EA
Y072012	SCREW,SSS,3/8-16X.63	EA
EMT446-12	SCREW,SSS,3/8-16X.63	EA
EMT113	SCREW,SSS,3/8-16X.75	EA
EMT446-13	SCREW,SSS,3/8-16X.75 .156 HOLE X 3/8 DEEP	EA
Y072026	SCREW,SSS,3/8-16X.75 1/8 HOLE IN THE END	EA
EMT446-16	SCREW,SSS,3/8-16X.75 EMT446-12	EA
EMT446B-16	SCREW,SSS,3/8-16X1.00	EA
EMT446-20	SCREW,SSS,3/8-16X1.00,BRASSTIP	EA
Y072023	SCREW,SSS,3/8-16X1.25	EA
EMT446-32	SCREW,SSS,3/8-16X1.25 EMT446-20	EA
Y072053	SCREW,SSS,3/8-16X2.00	EA
Y072043	SCREW,SSS,3/8-24UNFX.750LG	EA
Y072040	SCREW,SSS,4-40X.187	EA
0015573	SCREW,SSS,4-48X.187	EA
0015509	SCREW,SSS,4MM-0.7,10MM,STL,	EA
EMT445B-6	SCREW,SSS,4MM-0.7,40MM,STL	EA
Y072007	SCREW,SSS,5/16-18,3/8,STL,BRASS TIP	EA
Y072009	SCREW,SSS,5/16-18X.25	EA
EMT445B-8	SCREW,SSS,5/16-18X.31	EA
Y072027	SCREW,SSS,5/16-18X.50 BRASS-TIPPED	EA
Y072001	SCREW,SSS,5/16-18X.50 FLOOR STOCK,EMT445-8	EA
Y072003	SCREW,SSS,5/16-18X.50 STAINLESS STEEL W/NYLON PATCH	EA
EMT445-12	SCREW,SSS,5/16-18X.63	EA
EMT445B-16	SCREW,SSS,5/16-18X.75	EA
Y072033	SCREW,SSS,5/16-18X1.00 BRASS TIP	EA
EMT720-10	SCREW,SSS,5/16-18X1.50	EA
Y072028	SCREW,SSS,5/16-24X.63 CUP POINT	EA
Y072039	SCREW,SSS,5/8-11X.75	EA
0015510	SCREW,SSS,5-44X.25	EA
0016153	SCREW,SSS,5MM-0.8,12MM,STL	EA

D W A R E * H A R D W A R E

EMT668-4	SCREW,SSS,5MM-0.8,16MM,STL	EA
Y072037	SCREW,SSS,6-32X.25	EA
0016264	SCREW,SSS,6-32X.25	EA
Y072004	SCREW,SSS,6MM-1.00,16MM,STL	EA
Y072030	SCREW,SSS,8-32X.19	EA
Y072011	SCREW,SSS,8-32X.19 STAINLESS STEEL	EA
Y072035	SCREW,SSS,8-32X.25	EA
Y072014	SCREW,SSS,8-32X.25 W/NYLOK PATCH	EA
0015512	SCREW,SSS,8-32X.38	EA
EMT704B-25	SCREW,SSS,8MM-1.25,16MM,STL	EA
EMT704-20	SCREW,SSS,M10 X25,BRASS TIP	EA
0015032	SCREW,SSS,M10,20	EA
EMT704-25	SCREW,SSS,M10,30.00,STL	EA
EMT704-12	SCREW,SSS,M10-1.5,25,STL	EA
EMT704B-12	SCREW,SSS,M10X12	EA
EMT704-16	SCREW,SSS,M10X12,BRASS TIP	EA
EMT704B-20	SCREW,SSS,M10X16,CUP POINT	EA
0012147	SCREW,SSS,M10X20,BRASS TIP	EA
0016316	SCREW,SSS,M3,5.00,STL	EA
P-4830	SCREW,SSS,M3-.5,10MM,STL	EA
0005217	SCREW,SSS,M3X0.5,3.00,STN STL CUP POINT	EA
0012148	SCREW,SSS,M4,4.00,STL,NYL TIP	EA
EMT692-16	SCREW,SSS,M4,6.00,STL	EA
EMT692-8	SCREW,SSS,M4-.7,16,STL	EA
Y072052	SCREW,SSS,M4-.7,8,STL	EA
Y072046	SCREW,SSS,M4-.7X12 FLOOR STOCK	EA
EMT664-20	SCREW,SSS,M4-.7X20	EA
Y072051	SCREW,SSS,M5-.08,20,STL	EA
0016317	SCREW,SSS,M5-.8 X 8M	EA
Y072041	SCREW,SSS,M5-.8,6MM,STL,FLAT POINT	EA
Y072054	SCREW,SSS,M5-.8X5,FLAT BOTTOM 6.2 OAL	EA
Y072048	SCREW,SSS,M5-.8X5,FLAT BOTTOM S.S. X.6 MM OAL	EA
Y072034	SCREW,SSS,M5X.8 X 6MM LG STEEL	EA
0010192	SCREW,SSS,M5X0.8X10	EA
Y072055	SCREW,SSS,M6 X 1.0,12.00,STL,CUP	EA
EMT672-10	SCREW,SSS,M6,45.00,STL,CUP PT	EA
EMT672-20	SCREW,SSS,M6X1X10	EA
Y072049	SCREW,SSS,M6X1X20	EA
EMT672-6	SCREW,SSS,M6X1X8MM PER ANSI B18.6.2	EA
EMT693B-12	SCREW,SSS,M6X6	EA
0016348	SCREW,SSS,M8-1.25 X 12 BRASS TIP	EA
EMT693-12	SCREW,SSS,M8-1.25,10MM,STL	EA
EMT693-20	SCREW,SSS,M81.25,12MM LG	EA
EMT693-8	SCREW,SSS,M8-1.25,20,STL	EA
EMT693-30	SCREW,SSS,M8-1.25,8,STL	EA
2200-032	SCREW,SSS,M8X1.25X30	EA

OTHER SCREWS



Part	Description	UOM
P-4752	SCREW,STL,DRV	EA
0016607	SCREW,THUMB,#10-24 X .75 LG	EA
EMT522	SCREW,THUMB,3/8-16,1.5,STL	EA
0014323	SCREW,TORX,10-32 X 1/2	EA
0014321	SCREW,BHCS,M6 X 1.00,10MM	EA
TM153	SCREW,BHCS,M6 X 1.00,6MM	EA
50223-106	5/16-18 X 3/8"LG SET SCREW	EA
P-4613	SCREW,#10-32,0.50,STL,GROUND	EA
0015596	SCREW,12.70,HEX LOCKING	EA
0015527	SCREW,18-8,5/16",STL,ROUND HEAD	EA
0008864	SCREW,2.5MM-45,16MM,STL,BLACK OXIDE	EA
EMT718	SCREW,6-32,0.25,STNLS,ORING	EA
Y074004	SCREW,6-32X.38,THREADCUTTING TYPE F	EA
0016320	SCREW,ELPS,DIE,10-32X.375 WITH NYLOK PATCH	EA
EMT677-6	SCREW,FHCSS,6-32,STNLS,SLOTTED 18-8 STAINLESS	EA
Y070034	SCREW,FHCSS,M3X.5X6,STNLS SLOTTED,A2,STAINLESS-STEEL	EA
Y070030	SCREW,FHS,1/2-13X.875 SS	EA
EMT662-4	SCREW,FHSH,1/4-20X.625,GRADE 8	EA
EMT732-6	SCREW,FILLISTER,10-24X.25	EA
EMT673-16	SCREW,FLHCS,10-24 X .38 FILLISTER HEAD SCREW	EA
0015826	SCREW,HDS,5/8-11 X 1"LG	EA
Y074105	SCREW,JACKING,1/4-28,3/8"LONG,HALF DOG	EA
0008951	SCREW,LOCKING,1/4-20 X .15 LG STAINLESS STEEL	EA
0017297	SCREW,M10X1.5,30.00,STL,FHCS	EA
0015906	SCREW,M5,20.00,STNLS	EA
0015908	SCREW,PHS,4MM,4MM-0.7,10MM,STL	EA
0015891	SCREW,PHS,5MM,5MM-0.8,10MM,STL	EA
0008789	SCREW,PHS,8MM,8MM-32,4.5",STL	EA
0008790	SCREW,PHS,M4,10.00,ZINC	EA

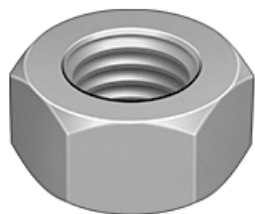
*



0014531	SCREW,PHS,M5,10.00,ZINC	EA
0014386	SCREW,PHS,M6 X 1.0,16MM	EA
0015026	SCREW,PHS,STNLS,M4 X .70,22MM	EA
0003952	SCREW,RHMS,#8-32 X 1/4"	EA
G4352	SCREW,ROD,THREADED,M5X0.8,3.00	EA
50223-101	SCREW,SET,M5X6MM LONG	EA
P-3736	SCREW,SET,SHSS,5/8-11X3/4" LG	EA
0016342	SCREW,SHCH,M4X16,GRADE 12.9	EA
0014872	SCREW,SHCST,8X32X.75 TORX HEAD	EA

HEX NUTSH
A
R
D
W
A
R
E

Part	Description	UOM
EMT435HX-20	NUT,HEX,#10-24	EA
EMT685HX-20	NUT,HEX,1.25-7	EA
0015546	NUT,HEX,1.25-7,LH THDS	EA
0014596	NUT,HEX,1/2"-13,3/4",ZINC FINISH	EA
0014597	NUT,HEX,1/4"-20	EA
EMT435-4	NUT,HEX,1/4"-20	EA
EMT439-4	NUT,HEX,1/4-20	EA
EMT439HX-3	NUT,HEX,1/4-28	EA
0015536	NUT,HEX,10-32	EA
0017286	NUT,HEX,10-32,3/8",STL	EA
Y058020	NUT,HEX,16	EA
EMT435-12	NUT,HEX,1-8UNC	EA
0015542	NUT,HEX,3/4-10 THDS	EA
0015543	NUT,HEX,3/8"-16,9/16",ZINC FINISH	EA
EMT435-6	NUT,HEX,3/8"-24,9/16",ZINC FINISH	EA
0016130	NUT,HEX,3/8X16	EA
0014598	NUT,HEX,4-40,4MM	EA
0015539	NUT,HEX,5/16"-18	EA
EMT685-10	NUT,HEX,5/8"-11,15/16",ZINC FINISH	EA
Y058019	NUT,HEX,5/8-11	EA
0015552	NUT,HEX,5/8-11UNC	EA
0015535	NUT,HEX,6MM-1.0,STL	EA
EMT435AN-4	NUT,HEX,8-32,11/32",STL	EA
0000162	NUT,HEX,ACORN,1/4-20	EA
0014601	NUT,HEX,ACORN,M5	EA
0014609	NUT,HEX,COUPLING,M4 X .70	EA
0014610	NUT,HEX,FINISHED,1/2" X 13	EA
0014616	NUT,HEX,JAM,5/8" X 11	EA
0014584	NUT,HEX,JAM,M12 X 1.75	EA
0017301	NUT,HEX,JAM,M16-2.0	EA
0014614	NUT,HEX,M10	EA
0008705	NUT,HEX,M10 X 1.5	EA
0014618	NUT,HEX,M12	EA
P-4291	NUT,HEX,M12 X 1.75	EA
0014619	NUT,HEX,M12X1.75	EA
0014620	NUT,HEX,M14 X 2.0	EA
0014621	NUT,HEX,M16 X 2.0	EA
0014591	NUT,HEX,M20 X 2.5	EA
P-4318	NUT,HEX,M3 X .50	EA
0014600	NUT,HEX,M3X0.5	EA
0014583	NUT,HEX,M4 X .70	EA
0017284	NUT,HEX,M5-0.8	EA
0014612	NUT,HEX,M8	EA
0014189	NUT,HEX,M8 X 1.25	EA
P-4305	NUT,HEX,M8,INSERT,NYLON	EA
0008723	NUT,HEX,M8X1.25	EA

JAM NUTSH
A
R
D

Part	Description	UOM
Y058024	NUT,JAM,0.62-11,STL	EA
EMT439JM-8	NUT,JAM,1"-8	EA
EMT439HX-3L	NUT,JAM,1/2-20	EA
0016435	NUT,JAM,10-32	EA
EMT435JM	NUT,JAM,3/4"-10,3/4",STL	EA
0015545	NUT,JAM,3/8-16	EA
EMT435-24	NUT,JAM,3/8-16,9/16",STL	EA
EMT439JM-10	NUT,JAM,3/8-24,9/16",STL	EA
P-4304	NUT,JAM,5/8-18 UNF	EA
0008315	NUT,JAM,M12,1.75	EA
P-4268	NUT,JAM,M16-1.5,24.00,STL	EA
0015544	NUT,JAM,M8X1.25	EA

LOCK NUTS

Part	Description	UOM
0015537	NUT,LOCK,1/2"-13,3/4",ZINC FINISH,NYLON INSERT	EA
0016285	NUT,LOCK,1/4"-20,7/16,ZINC FINISH NYLON INSERT	EA
0015541	NUT,LOCK,10-24,10MM,STL	EA

WARE



0014613	NUT,LOCK,3/8"-16,9/16",ZINC FINISH, NYLON INSERT	EA
0014617	NUT,LOCK,INSERT,M10 X 1.5	EA
0014604	NUT,LOCK,INSERT,M12 X 1.75	EA
0014605	NUT,LOCK,INSERT,M5 X .80	EA
0014611	NUT,LOCK,INSERT,M6 X 1.0	EA
0008751	NUT,LOCK,INSERT,M8 X 1.25	EA
0014592	NUT,LOCK,M10 X 1.5,NYLOCK	EA
0014380	NUT,LOCK,M3 X .50	EA
0014593	NUT,LOCK,M4 X .70	EA
0008748	NUT,LOCK,M4 X .70	EA
0014381	NUT,LOCK,M4 X 0.7,NYLOCK	EA
0008749	NUT,LOCK,M5 X .80	EA
0014382	NUT,LOCK,M5 X 0.8,NYLOCK	EA
0008750	NUT,LOCK,M6 X 1.0	EA
0002559	NUT,LOCK,M6 X 1.0,NYLOCK	EA
0002406	NUT,LOCK,REGLTR	EA

T-SLOT NUTS



Part	Description	UOM
P-2359-4	NUT,T-NUT,1/4-20,SING,ECON,15SER	EA
P-2359-2	NUT,T-NUT,5/16-18,SING,SLIDE,15SER	EA
P-2360-4	NUT,T-NUT,M6,SING,ECON,15SER	EA
P-3296	NUT,T-SLOT, M8X1.25,	EA
P-2359	NUT,T-SLOT,1/4-20,10 SERIES	EA
AG6400114P	NUT,T-SLOT,1/4-20,SING,ECON	EA
AG6400113P	NUT,T-SLOT,1/4-20,SINGLE,#3204	EA
AG6400115P	NUT,T-SLOT,1/4-20,SINGLE,STD	EA
0014590	NUT,T-SLOT,5/16,SINGLE,STD	EA
0014589	NUT,T-SLOT,M6 X 1.00,12.45MM	EA
P-2360-2	NUT,T-SLOT,M6 X 1.00,47.6MM	EA
P-2360-2	NUT,T-SLOT,M6,1.0,DBL #3800	EA
P-2779-4	NUT,T-SLOT,M6,1.0,DBL #3800	EA
P-2359-8	NUT,T-SLOT,M6,10SER,ECON	EA
P-2359-7	NUT,T-SLOT,M6,DROP IN,8020	EA
p-2779-2	NUT,T-SLOT,M6,SING,SLIDE,15SER	EA
P-2360-6	NUT,T-SLOT,M6,SINGLE BLACKZINC,3873	EA
0014586	NUT,T-SLOT,M6X1.00,SINGLE	EA
14587	NUT,T-SLOT,M8 X 1.25,16MM	EA
P-2359-6	NUT,T-SLOT,M8 X 1.25,75MM	EA
P-2360-3	NUT,T-SLOT,M8,SING,SLIDE,15SER	EA
P-2360-5	NUT,T-SLOT,M8X1.25,DBL	EA
P-1031	NUT,T-SLOT,M8X1.25,SINGLE	EA
0007875	NUT, T-SLOT, 10-32, SING, SLIDE	EA

OTHER NUTS



Part	Description	UOM
0008715	NUT,M5,PEM	EA
5770	NUT,M5,RIB	EA
0015581	NUT,M6,80/20.ROLL IN	EA
0015888	NUT,PLASTIC,1.00,0.31,NPT	EA
P-5008	NUT,RVT,0.8,5MM,STL	EA
1-1965	NUT,SQ,8MX1.25,17MMX15.9MM	EA
P-2359-3	NUT,SQUARE,5/16-18X9/16,.312TK	EA
EMT435WG-5	NUT,VALVE MOUNTING	EA
EMT446-6	NUT,WING,5/16-18	EA
TM558	NUT, COLLET DA 200	EA
TM580	NUT, END	EA
P-2359-5	NUT, FLANGE	EA
0008785	NUT,1.5,2.18,INSULATED	EA
0014607	NUT,ACME,3.00,NYLOCK	EA
14608	NUT,ACORN,M5 X .80	EA
0015892	NUT,ACORN,M6 X 1.0	EA
TM779	NUT,CHANNEL,24,10MM,SPRING	EA
TM620	NUT,COATED,ER25 HS,	EA
0014595	NUT,DEAD CENTER REMOVAL, 1-3/8-12 INTERNAL THREAD	EA
0014594	NUT,FLANGED RIVET,M5 X .80	EA
EMT435-3	NUT,FLANGED RIVET,M6 X 1.0	EA

DOWEL PINS

Part	Description	UOM
Y061035	PIN,DOWEL,.093X.25	EA
Y061015	PIN,DOWEL,.094X.625,60 RC	EA
EMT715-8	PIN,DOWEL,.125X.375	EA
EMT696-6	PIN,DOWEL,.125X.50	EA
EMT696-8	PIN,DOWEL,.187X.375	EA
EMT696-12	PIN,DOWEL,.187X.50	EA
Y061055	PIN,DOWEL,.187X.75	EA
03017-77	PIN,DOWEL,.187X2.00	EA
03017-77	PIN,DOWEL,.250X.500,W/FLAT	EA

*
HARDWARE

*

HARDWARE * HARDWARE



Y061006	PIN,DOWEL,,250X.500,W/FLAT	EA
03017-86	PIN,DOWEL,,250X.750	EA
P-4736	PIN,DOWEL,,250X.750,W/FLAT	EA
EMT175	PIN,DOWEL,,250X.750,W/GROOVE M	EA
0016579	PIN,DOWEL,,.3125X.75	EA
1-868-32	PIN,DOWEL,,.375,.750,STL	EA
1-868-12	PIN,DOWEL,,.3753	EA
1-106-1	PIN,DOWEL,,.375X.375	EA
1-868-22	PIN,DOWEL,,.375X.500,ALIGNMENT FOR SPLIT RINGS	EA
Y061052	PIN,DOWEL,,.375X.688 WS	EA
EMT744-20	PIN,DOWEL,,.375X1.00	EA
1-106-2	PIN,DOWEL,,.375X1.25 LG	EA
EMT744-24	PIN,DOWEL,,.375X1.25,ALIGNMENT FOR SPLIT RINGS	EA
EMT744-64	PIN,DOWEL,,.375X1.500	EA
P-3600	PIN,DOWEL,,.375X2.00	EA
Y061041	PIN,DOWEL,,.375X2.25,HARDENED	EA
03017-93	PIN,DOWEL,,.375X2.75	EA
EMT670-16	PIN,DOWEL,,.437X2.500,W/FLAT	EA
Y061027	PIN,DOWEL,,.500X1.00	EA
EMT670-32	PIN,DOWEL,,.500X1.000	EA
EMT670-36	PIN,DOWEL,,.500X2.00	EA
P-5007	PIN,DOWEL,,.500X2.250	EA
P-4420	PIN,DOWEL,0.25,1.00	EA
0016366	PIN,DOWEL,0.47,1.18	EA
0014513	PIN,DOWEL,1/2",1.25",STL	EA
0016330	PIN,DOWEL,1/2, 2 1/2	EA
0016331	PIN,DOWEL,1/4",1",STL	EA
0015492	PIN,DOWEL,1/4",1.25",STL	EA
0015492	PIN,DOWEL,1/4",5/8",STL	EA
0016329	PIN,DOWEL,1/4",5/8",STL	EA
0014512	PIN,DOWEL,1/4",7/8",STL	EA
0016606	PIN,DOWEL,1/4, 3/4	EA
0002127	PIN,DOWEL,1/4,3/8,STL	EA
0016364	PIN,DOWEL,1/4X13/8LG FASTENAL 0172696	EA
0005710	PIN,DOWEL,1/8",1.25",STL	EA
0008706	PIN,DOWEL,10.00,20.00,STL	EA
0002047	PIN,DOWEL,12.00,20.00	EA
0015595	PIN,DOWEL,12.00,30.00,STL FASTENAL 0154398	EA
EMT671	PIN,DOWEL,12MM,36MM,STL	EA
DIN6325	PIN,DOWEL,2.5MMX6MM	EA
0015973	PIN,DOWEL,3.00,25.00 METRIC,FL	EA
0016365	PIN,DOWEL,3/16,3/4,STL	EA
0016328	PIN,DOWEL,3/8",2",STL	EA
0004330	PIN,DOWEL,3MM,24MM,STL	EA
EMT479-24	PIN,DOWEL,4.00,10.00,METRIC FA	EA
0004728	PIN,DOWEL,4MMX24MM	EA
0006828	PIN,DOWEL,5.00,10.00	EA
0015974	PIN,DOWEL,5.00,30.00,METRIC	EA
0015574	PIN,DOWEL,6MM,12MM,STL	EA
0016610	PIN,DOWEL,6MM,14MM,STL	EA
0015490	PIN,DOWEL,6MM,20MM,STL	EA
0014308	PIN,DOWEL,8MM,30MM,STL	EA
0014309	PIN,DOWEL,M10 X 1.5,25.00	EA
0002124	PIN,DOWEL,M10 X 1.5,30.00	EA
0014310	PIN,DOWEL,M10,30MM	EA
0014311	PIN,DOWEL,M12 X 1.75,50.00	EA
0014304	PIN,DOWEL,M12 X 1.75,55.00	EA
0002125	PIN,DOWEL,M12 X 30MM	EA
0002126	PIN,DOWEL,M12X30MM	EA
0014305	PIN,DOWEL,M12X40MM	EA
0016553	PIN,DOWEL,M3 X 0.5,10.00	EA
0014306	PIN,DOWEL,M3,12MM,STL	EA
0014307	PIN,DOWEL,M6 X 1.0,25.00	EA
0002872	PIN,DOWEL,M6 X 1.0,30.00	EA
2200-050	PIN,DOWEL,M6X25MM,HARDENED FASTENAL #0154390	EA

ROLL/SPRING PINS

Part	Description	UOM
Y060026	PIN,ROLL,,.0625 X .75	EA
Y060010	PIN,ROLL,,.062X.18 ZINC PLATE	EA
Y060011	PIN,ROLL,,.093 X .75	EA
EMT118-12	PIN,ROLL,,.093X.375	EA
Y060016	PIN,ROLL,,.093X.75	EA
Y060015	PIN,ROLL,,.125 X .375,STAINLESS	EA
Y060020	PIN,ROLL,,.125 X .625,STAINLESS	EA
Y060012	PIN,ROLL,,.125 X .750,STEEL	EA
EMT529-4	PIN,ROLL,,.125 X .875 STEEL	EA
EMT529-6	PIN,ROLL,,.125X.25 *	EA

ARE * HARDWARE * ARE

Slotted Spring Pins



Coiled Spring Pins



50618-20	PIN,ROLL,,125X.375 SAME AS 50618-20	EA
50618-9	PIN,ROLL,,125X.375	EA
50618-12	PIN,ROLL,,125X.500	EA
50618-47	PIN,ROLL,,125X.750	EA
50618-49	PIN,ROLL,,125X.750,	EA
EMT529-16	PIN,ROLL,,125X.937	EA
EMT529-16	PIN,ROLL,,125X1.0	EA
Y060024	PIN,ROLL,,125X1.0	EA
50618-48	PIN,ROLL,,125X1.00,STAINLESS	EA
50618-18	PIN,ROLL,,156X.875	EA
Y060030	PIN,ROLL,,187X1.500	EA
Y060029	PIN,ROLL,,188 X .875,S.S.	EA
Y060022	PIN,ROLL,,188 X 1.00,S.S.	EA
50618-56	PIN,ROLL,,188 X 1.25	EA
50618-42	PIN,ROLL,,250X.875	EA
50618-3	PIN,ROLL,,250X1.500	EA
50618-21	PIN,ROLL,,25X.625	EA
50618-1	PIN,ROLL,,25X1.75	EA
50618-23	PIN,ROLL,,375X1.00	EA
Y060021	PIN,ROLL,,375X2.500	EA
50618-25	PIN,ROLL,,500 X 2.75 CARBON STEEL	EA
50618-43	PIN,ROLL,,500X2.500	EA
50618-15	PIN,ROLL,0.19,0.88	EA
P-1781-8	PIN,ROLL,0.19,1.00	EA
P-1781-4	PIN,ROLL,1/16"X1/2"LG	EA
0016605	PIN,ROLL,1/16"X1/4" LG	EA
50618-27	PIN,ROLL,1/16,3/16,STL	EA
EMT529-24	PIN,ROLL,1/8 X .625	EA
EMT529-5	PIN,ROLL,1/8 X 1.50 LG	EA
EMT529-8	PIN,ROLL,1/8,5/16,STL	EA
EMT529-20	PIN,ROLL,1/8X.50 *	EA
EMT529-28	PIN,ROLL,1/8X1.25LG	EA
EMT529-32	PIN,ROLL,1/8X1.75 LG	EA
EMT529-10	PIN,ROLL,1/8X2.00	EA
EMT690-12	PIN,ROLL,1/8X5/8	EA
EMT118-16	PIN,ROLL,3/16 DIA X .75 LG	EA
EMT748-16	PIN,ROLL,3/32,1,STL	EA
Y060007	PIN,ROLL,M3X16	EA
P-1326-12	PIN,SPRING,.093X.25 CARBON STEEL	EA
0016333	PIN,SPRING,.125 DIA X .50 LG	EA
0016334	PIN,SPRING,3/16",1",STL	EA
0016332	PIN,SPRING,3/16",1.25",STL	EA
0016369	PIN,SPRING,3/16",3/4",STL	EA
0016367	PIN,SPRING,3/32",1",STL	EA
0016336	PIN,SPRING,3/32",1/4",STL	EA
0016580	PIN,SPRING,3/8",1.5",STL	EA
0010884	PIN,SPRING,5/32,3/4,STL	EA

OTHER PINS

Part	Description	UOM
0001630	PIN,,125X1.250	EA
0001629	PIN,CLEVIS,,1875 X 1.25LG	EA
EMT156	PIN,CLEVIS,,25 X 1.25LG	EA
56120	PIN,COTTER,#9	EA
EMT745-4	PIN,COTTER,,.042 WIRE	EA
Y060017	PIN,KEY,,125X.375,KNURLED END	EA

FLAT WASHERS

Part	Description	UOM
0016131	WASH,FLAT,#8 - 7/16	EA
0016581	WASH,FLAT,,.219",1",.062",STL	EA
0011416	WASH,FLAT,,.406",.875",.050,STNLS, 3/8" BOLT SIZE	EA
0002747	WASH,FLAT,0.19,0.44,0.08,STL	EA
10-20-4	WASH,FLAT,0.25,0.49,0.03	EA
1-6988	WASH,FLAT,0.31,0.63,0.13,STL,M	EA
0015566	WASH,FLAT,0.81,1.50,0.13	EA
0014659	WASH,FLAT,0.812",2",0.148",STL,ZINC FINISH	EA
0014639	WASH,FLAT,1/2 X 3/4	EA
0002033	WASH,FLAT,1/4 X 1/16	EA
0015556	WASH,FLAT,16.00,1.25,0.13,STL	EA
0015558	WASH,FLAT,5/16",3/4",1/8",STL,BLACK OXIDE	EA
0014658	WASH,FLAT,5/32",3/8",5/64",STL,BLACK OXIDE	EA
0014387	WASH,FLAT,5/8 X 1-3/8	EA
0012144	WASH,FLAT,6.40,12.00,STNLS,M6	EA
0014388	WASH,FLAT,8.40,16.00,STL	EA
0008123	WASH,FLAT,8.40,16.00,STNLS,M8	EA
0014654	WASH,FLAT,M6	EA
0014644	WASH,FLAT,USS,1/2	EA

HARDWARE

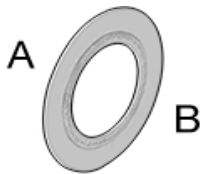
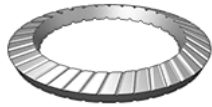
0014660	WASH,FLAT,USS,1/4"	EA
0014652	WASH,FLAT,USS,3/4	EA
0014650	WASH,FLAT,USS,3/8,0.438IDX1.0ODX0.083THK	EA
0014657	WASH,FLAT,USS,5/16	EA
0014656	WASH,FLAT,USS,5/8	EA
0008779	WASH,FLAT,USS,7/16	EA

LOCK WASHERS



Part	Description	UOM
0015562	WASH,LOCK,0.32,0.58,0.08,STL	EA
0015563	WASH,LOCK,0.385",0.680",0.094",STL,ZINC FINISH	EA
0009929	WASH,LOCK,0.512",0.869",0.125",STL,ZINC FINISH	EA
52752-1	WASH,LOCK,1.26,1.65,0.05,STL	EA
0014643	WASH,LOCK,3/8,FLR.STK.	EA
0014642	WASH,LOCK,EXTERNAL TOOTH,#10	EA
0014646	WASH,LOCK,EXTERNAL TOOTH,#8	EA
0014647	WASH,LOCK,EXTERNAL TOOTH,1/4"	EA
0014653	WASH,LOCK,INT/EXT TOOTH 1/4"	EA
0014651	WASH,LOCK,INT/EXT TOOTH,3/8	EA
0014641	WASH,LOCK,INT/EXT TOOTH,5/16"	EA
0014655	WASH,LOCK,INTERNAL TOOTH,#8	EA
0014648	WASH,LOCK,INTERNAL TOOTH,1/2	EA
0008722	WASH,LOCK,MEDIUM SPLIT,1/4"	EA
Y064025	WASHER,LOCK,1/4,FLR.STK. WS	EA
P-1725-7	WASHER,LOCK,5/16,SPLIT SS 71065	EA
P-4033	WASHER,LOCK,W-07	EA

OTHER WASHERS



Part	Description	UOM
TW10	WASHER,THRUST,,.375X.75X.031	EA
Y064024	WASH,.512X.945X.98,METRIC	EA
P-4303	WASH,0.20,0.35,0.03,STN STL	EA
Y064047	WASH,0.50,1.06,0.07	EA
0014553	WASH,0.53,1.125,0.125,STL	EA
0014554	WASH,1" X 1/2,REDUCING	EA
0014552	WASH,1" X 3/4,REDUCING	EA
P-4331	WASH,1-1/2" X 1.0,REDUCING	EA
0014645	WASH,6.4MMX12MMX1.5MM,NYLON	EA
P-4629	WASH,FENDER,1/4 X 1	EA
0014640	WASH,FLANGED,1.0 OD	EA
0008781	WASH,STAR,0.26,0.48,0.03,STNSTL	EA
6-12-4	WASH,STAR,0.31,0.60,0.03,STNLS	EA
93485A011	WASHER,,.187X.375X.125	EA
1-2004	WASHER,,.203X.44X.029,ELPS	EA
10-24-4-B	WASHER,,.203X.490X.120,ELPS	EA
Y064029	WASHER,,.312X.75X.125BLACKENED	EA
52752-2	WASHER,BELLEVILLE,1/4" STAINLESS	EA
0008777	WASH,HARD,STL,1/2	EA
0008776	WASH,HARD,STL,1/4	EA
0008778	WASH,HARD,STL,3/16	EA
0008780	WASH,HARD,STL,3/8	EA
0014188	WASH,HARD,STL,5/8	EA

CABINET GROMMET



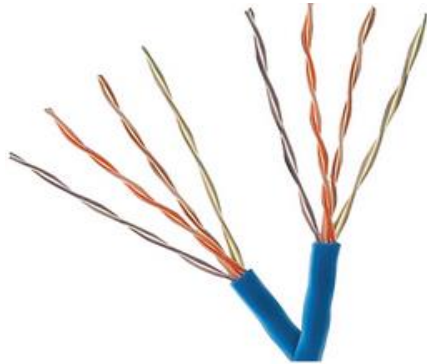
Part	Description	UOM
E-1809	CAB,BLANKING PLATE,GRY,KEL16	EA
E-1260	CAB,ENTRY,FRM,KVT32,GRY	EA
E-1269	CAB,ENTRY,GRM,KT10,GRY	EA
E-1269	CAB,ENTRY,GRM,KT10,GRY	EA
E-1270	CAB,ENTRY,GRM,KT11,GRY	EA
E-1270	CAB,ENTRY,GRM,KT11,GRY	EA
E-1271	CAB,ENTRY,GRM,KT12,GRY	EA
E-1271	CAB,ENTRY,GRM,KT12,GRY	EA
E-1272	CAB,ENTRY,GRM,KT13,GRY	EA
E-1272	CAB,ENTRY,GRM,KT13,GRY	EA
E-1273	CAB,ENTRY,GRM,KT14,GRY	EA
E-1274	CAB,ENTRY,GRM,KT15,GRY	EA
E-1275	CAB,ENTRY,GRM,KT16,GRY	EA
E-1276	CAB,ENTRY,GRM,KT17,GRY	EA
E-1465	CAB,ENTRY,GRM,KT18,GRY	EA
E-1466	CAB,ENTRY,GRM,KT19,GRY	EA
E-1277	CAB,ENTRY,GRM,KT2/4,GRY	EA
E-1278	CAB,ENTRY,GRM,KT2/5,GRY	EA
E-1279	CAB,ENTRY,GRM,KT2/6,GRY	EA
E-1467	CAB,ENTRY,GRM,KT20,GRY	EA
E-2298	CAB,ENTRY,GRM,KT22,GRY	EA
E-1580	CAB,ENTRY,GRM,KT26,GRY	EA
E-1262	CAB,ENTRY,GRM,KT3,GRY	EA
E-1570	CAB,ENTRY,GRM,KT32,GRY	EA

ELECTR

I C A L * E L E C T R I C A L

E-1571	CAB,ENTRY,GRM,KT34,GRY	EA
E-1263	CAB,ENTRY,GRM,KT4,GRY	EA
E-1280	CAB,ENTRY,GRM,KT4/5,GRY	EA
E-1280	CAB,ENTRY,GRM,KT4/5,GRY	EA
E-1264	CAB,ENTRY,GRM,KT5,GRY	EA
E-1265	CAB,ENTRY,GRM,KT6,GRY	EA
E-1265	CAB,ENTRY,GRM,KT6,GRY	EA
E-1266	CAB,ENTRY,GRM,KT7,GRY	EA
E-1266	CAB,ENTRY,GRM,KT7,GRY	EA
E-1267	CAB,ENTRY,GRM,KT8,GRY	EA
E-1267	CAB,ENTRY,GRM,KT8,GRY	EA
E-1268	CAB,ENTRY,GRM,KT9,GRY	EA
E-1268	CAB,ENTRY,GRM,KT9,GRY	EA
E-1468	CAB,ENTRY,LG,PLUG,GRY	EA

CABLES



Part	Description	UOM
E-2076	CABLE, 10/3, TRAY, ROHS VARIOUS	EA
E-2159	CABLE, 24AWG/8C, BLU, CAT5E, 1000	EA
E-1569	CABLE, 4CON, 4GA, PER FOOT	FT
0004554	CABLE, 8/4, TRAY, ROHS, UL	FT
TP36	CABLE, TIE, 7", 40 LB, NATURAL 1000 PER PKG	EA
TP37	CABLE, TIE, 8", 18 LB, NATURAL 1000 PER PKG	EA
0003393	CABLE, USB, EXTENSION, 3M	EA
0002439	CBL, AWG 18, 25CONN	FT
0007269	CBL, 12/4, TRAY, UL, CSA, CE, ROHS	FT
E-2386	CBL, 12C, 18AWG, UNSHIELDED	FT
0003368	CBL, 12C, 28AWG, UNSHIELDED	FT
E-2069	CBL, 18/12, TRAY	FT
E-2070	CBL, 18C, 18AWG, UNSHIELDED	FT
E-1572	CBL, 22/1PR, 24-1PR, SHIELDED	FT
E-2071	CBL, 25C, 18AWG, UNSHIELDED	FT
0013961	CBL, 2C, 22AWG, UNSHIELDED	FT
0006000	CBL, 2C, 24AWG, SHIELDED	FT
0002479	CBL, 2C, 24AWG, UNSHIELDED	FT
0015155	CBL, 2C, A8AWG, UNSHIELDED	FT
E-2713	CBL, 2PAIR, 24AWG, SHIELDED	FT
0002981	CBL, 2PAIR, 28AWG, SHIELDED	FT
0007286	CBL, 3C, 10AWG, UNSHIELDED	FT
E-2074	CBL, 3C, 12AWG, UNSHIELDED	FT
E-2072	CBL, 3C, 14AWG, UNSHIELDED	FT
E-2273	CBL, 3C, 18AWG, SHIELDED	IN
E-2067	CBL, 3C, 18AWG, UNSHIELDED	FT
0014047	CBL, 3C, 22AWG, UNSHIELDED	FT
0002480	CBL, 3C, 24AWG, SHIELDED	FT
0000345	CBL, 3C, 24AWG, UNSHIELDED	FT
0000497	CBL, 3PAIR, 22AWG, UNSHIELDED	FT
0002485	CBL, 3PAIR, 24AWG, SHIELDED	FT
0002484	CBL, 3PAIR, 28AWG, SHIELDED	FT
0010808	CBL, 4C, 10, SHIELDED	FT
0016242	CBL, 4C, 10AWG, UNSHIELDED	FT
E-2077	CBL, 4C, 10AWG, UNSHIELDED	EA
0013889	CBL, 4C, 12AWG, UNSHIELDED	FT
0008481	CBL, 4C, 14AWG, SHIELDED	FT
E-2073	CBL, 4C, 14AWG, UNSHIELDED	FT
0013379	CBL, 4C, 16AWG, UNSHIELDED	FT
0006211	CBL, 4C, 18AWG, UNSHIELDED	FT
0012371	CBL, 4C, 22AWG, SHIELDED	FT
0014970	CBL, 4C, 6AWG, SHIELDED	FT
E-2284	CBL, 4C, 8AWG, SHIELDED	FT
0003079	CBL, 4C, 8AWG, UNSHIELDED	FT
E-1311	CBL, 4PAIR, 24GA, SHIELDED	FT
0007129	CBL, 6/4, TRAY RATED, UL, CSA, CE, R	FT
0015021	CBL, 6C, 18AWG, UNSHIELDED	FT
E-2242	CBL, 7C, 14AWG, UNSHIELDED	IN
0012410	CBL, 7C, 18AWG, SHIELDED	IN
E-2068	CBL, 7C, 18AWG, UNSHIELDED	FT
0008485	CBL, CLP, .5	EA
A-10703	CBL, JUMPER, PEN POWER SUPPLY	EA
E-1911	CBL, PROFIBUS	MR
0007546	CBL, PULL TAPE, 900 LB	FT
0009335	CBL, SHIELDED, 4 PAIR, 24AWG	FT
0008831	CBL, SLEEVING, CONVOL, 1/2"	FT
0008830	CBL, SLEEVING, CONVOL, 3/8"	FT
0008811	CBL, SPIRAL, WRAP, 1"	FT
0008801	CBL, SPIRAL, WRAP, 1/2"	FT
0008802	CBL, SPIRAL, WRAP, 3/4"	FT
0016321	CBL, TIE, 8" 50LB	EA

ELECTRICAL

0015500	CBL,TIE,,6" 50LB HOOK	EA
0015579	CBL,TIE,11.1",SMALL	EA
0000436	CBL,TIE,12",MED TY526MX	EA
0000436	CBL,TIE,12",MED TY526MX	EA
0000437	CBL,TIE,15",MED TY528MX	EA
0000438	CBL,TIE,15",WIDE TY527MX	EA
0000433	CBL,TIE,4",SMALL TY533MX	EA
0000433	CBL,TIE,4",SMALL TY533MX	EA
0000434	CBL,TIE,6",SMALL TY5232MX	EA
0015580	CBL,TIE,7",18LB	EA
0015580	CBL,TIE,7",18LB	EA
0015580	CBL,TIE,7",18LB	EA
0000435	CBL,TIE,8",MED TY525MX	EA
0000435	CBL,TIE,8",MED TY525MX	EA
0015517	CBL,TIE,MNT, MULTIPLE BRIDGE RUBBER MOUNT	EA
0015518	CBL,TIE,MNT, MULTIPLE BRIDGE SCREW MOUNT	EA
0015516	CBL,TIE,MNT,0.25"	EA
0015519	CBL,TIE,MNT,0.75"X0.75"X0.22"	EA
0015515	CBL,TIE,MNT,1.5"X1.5"X1.5"	EA
0015923	CBL,TIE,MNT,1/4" SCREW	EA
0015590	CBL,TIE,MNT,3/4"	EA
0008812	CBL,TRAY,10/4,ROHS	FT
0008823	CBL,TUBING,SHRINK,1/16",YEL	FT
0008825	CBL,TUBING,SHRINK,1/8",BLK	FT
0008826	CBL,TUBING,SHRINK,3/16",BLK	FT
0008826	CBL,TUBING,SHRINK,3/16",BLK	FT

CONNECTORS

Part	Description	UOM
0002767	CONN,1.5A,100V,,6P,6WIRE,MINI-	EA
0008769	CONN,12-10AWG,QCK,CNCT	EA
0008771	CONN,22-18AWG,HEAT,SHRINK	EA
0008149	CONN,BASE,6 PIN,14S	EA
0000351	CONN,BLANK PLT	EA
0007279	CONN,BLANKING,M25	EA
0000827	CONN,BUSH,GUIDE	EA
0015584	CONN,CORD GRIP,1" NPT , BLACK	EA
E-2097	CONN,CORD GRIP,1/2"NPT,6-12MM ROHS	EA
E-2270	CONN,CORD GRIP,1/2"NPT,W NUT	EA
E-2179	CONN,CORD GRIP,3/4"NPT,-.5-.7MM	EA
E-2240	CONN,CORD GRIP,3/8"NPT	EA
E-2065	CONN,CORD GRIP,PG11,5-10MMDIA	EA
E-2688	CONN,CORD GRIP,PG13.5,-.5-.562	EA
E-2066	CONN,CORD GRIP,PG13.5,6-12MMDI	EA
0011328	CONN,CRIMP,F,16AWG	EA
0011329	CONN,CRIMP,F,16AWG	EA
E-2537	CONN,CRIMP,FEMALE,22-26AWG	EA
0006786	CONN,D-SUB,15P,F,SOLDER CUP	EA
0002664	CONN,D-SUB,15P,M,SOLDER CUP L-	EA
0001208	CONN,D-SUB,9P,F,SOLDER CUP	EA
0001270	CONN,D-SUB,9P,M,SOLDER CUP	EA
E-2568	CONN,D-SUB,COVER,9P,45DEG	EA
E-2568	CONN,D-SUB,COVER,9P,45DEG	EA
E-2569	CONN,D-SUB,COVER,9P,STR	EA
E-2563	CONN,D-SUB,MALE,9P,CRMP,W/PINS	EA
0007039	CONN,FEMALE,22-24AWG	EA
E-2607	CONN,FEMALE,22AWG	EA
E-1745	CONN,FEMALE,HAN D, CRIMP	EA
0002951	CONN,FEMALE,PIN,24-30AWG	EA
0002974	CONN,FIBRE,SC,1MM	EA
0011312	CONN,HAN,BUSH,PIN	EA
0011311	CONN,HAN,GUIDE,PIN	EA
0001209	CONN,HD-SUB,15P,F,SOLDER CUP	EA
0002481	CONN,HOUSING,12P	EA
0005678	CONN,HOUSING,JR2-POS,MINIFIT	EA
0002950	CONN,HSG,12POS	EA
E-2519	CONN,HSG,20P	EA
E-2521	CONN,HSG,22P	EA
E-2606	CONN,HSG,9POS	EA
0007912	CONN,INSERT,10AWG	EA
0007913	CONN,INSERT,10AWG	EA
0008495	CONN,INSERT,12AWG,FEMALE	EA
0008494	CONN,INSERT,12AWG,MALE	EA
0007916	CONN,INSERT,14AWG	EA
0007919	CONN,INSERT,14AWG	EA
0013451	CONN,INSERT,16AWG,F	EA
0013450	CONN,INSERT,16AWG,M	EA
0007917	CONN,INSERT,18AWG	EA



ELECTRICAL * ELECT

0007920	CONN,INSERT,18AWG	EA
0007918	CONN,INSERT,22-26AWG	EA
0007921	CONN,INSERT,22-26AWG	EA
0008079	CONN,INSERT,26-22 AWG	EA
0008080	CONN,INSERT,26-22 AWG	EA
0014035	CONN,INSERT,F,2.85	EA
0014034	CONN,INSERT,M,2.85	EA
E-2098	CONN,LOCK NUT,1/2"NPT,ROHS	EA
E-2180	CONN,LOCK NUT,3/4"NPT	EA
E-2241	CONN,LOCK NUT,3/8"NPT	EA
E-2511	CONN,LOCKING,HNG	EA
0016091	CONN,LUG,1 AWG,5/16" STUD	EA
0016090	CONN,LUG,6AWG,1/4 STUD	EA
0016088	CONN,LUG,6AWG,3/8" CRIMP	EA
0016089	CONN,LUG,6AWG,600V,3/8" STUD	EA
E-1744	CONN,MALE,HAN D, CRIMP HARTING	EA
E-2552	CONN,MICRO FIT 3.0,14P,DUAL RO	EA
E-2553	CONN,MICRO FIT 3.0,16P,DUAL RO	EA
E-2513	CONN,MOD,HNG FRM	EA
0015592	CONN,NUT,CONDUIT,1 1/2"	EA
0000440	CONN,NUT,CORD GRIP,1/2" NPT	EA
0000441	CONN,NUT,CORD GRIP,3/4" NPT	EA
0000441	CONN,NUT,CORD GRIP,3/4" NPT	EA
0000442	CONN,NUT,CORD GRIP,3/8" NPT	EA
0000443	CONN,NUT,CORD GRIP,E-2065	EA
0000444	CONN,NUT,CORD GRIP,FOR E-2066	EA
0000828	CONN,PIN,GUIDE	EA
0000965	CONN,PIN,MALE	EA
E-2608	CONN,RECP,10A,4P,FEM	EA
0008150	CONN,RELIEF	EA
E-2160	CONN,RJ45,8WIRE	EA
0015837	CONN,TERMINAL,12-10 AWG,600,1/4,RING	EA
0015870	CONN,TERMINAL,12-10 AWG,600,1/4,RING	EA
0015864	CONN,TERMINAL,12-10 AWG,600,10MM,FORK	EA
0015866	CONN,TERMINAL,12-10 AWG,600,10MM,RING	EA
0015887	CONN,TERMINAL,12-10 AWG,600,3/8,RING	EA
0015871	CONN,TERMINAL,12-10 AWG,600,5/16,RING	EA
0015874	CONN,TERMINAL,12-10 AWG,600,8MM,RING	EA
0015862	CONN,TERMINAL,12-10 AWG,600,BUTT SPLICE	EA
0015842	CONN,TERMINAL,12-10 AWG,600,F,DISCONNECT	EA
0015841	CONN,TERMINAL,12-10 AWG,600,M,DISCONNECT	EA
0015873	CONN,TERMINAL,12-10 AWG,600,PIN	EA
0015836	CONN,TERMINAL,12-10 AWG,7/16,RING	EA
0015851	CONN,TERMINAL,16-14 AWG,10MM,RING	EA
0015875	CONN,TERMINAL,16-14 AWG,300,F	EA
0015853	CONN,TERMINAL,16-14 AWG,5/16,RING	EA
0015863	CONN,TERMINAL,16-14 AWG,600,1/4,RING	EA
0015860	CONN,TERMINAL,16-14 AWG,600,10MM,FORK	EA
0015859	CONN,TERMINAL,16-14 AWG,600,10MM,RING	EA
0015861	CONN,TERMINAL,16-14 AWG,600,5/16,RING	EA
0015855	CONN,TERMINAL,16-14 AWG,600,8MM,RING	EA
0015858	CONN,TERMINAL,16-14 AWG,600,BUTT SPLICE	EA
0015843	CONN,TERMINAL,16-14 AWG,600,F,DOUBLE CRIMP	EA
0015844	CONN,TERMINAL,16-14 AWG,600,F,DOUBLE CRIMP	EA
0015845	CONN,TERMINAL,16-14 AWG,600,M,DOUBLE CRIMP	EA
0015869	CONN,TERMINAL,16-14 AWG,600,PIN	EA
0015838	CONN,TERMINAL,16-14 AWG,F	EA
0015890	CONN,TERMINAL,18-8 AWG,600,TWIST ON	EA
0015848	CONN,TERMINAL,22-10 AWG,600,TWIST ON YELLOW	EA
0015847	CONN,TERMINAL,22-14 AWG,600,TWIST ON ORANGE	EA
0015846	CONN,TERMINAL,22-14 AWG,TWIST ON BLUE	EA
0015867	CONN,TERMINAL,22-16 AWG,600,1/4,RING	EA
0015856	CONN,TERMINAL,22-16 AWG,600,10MM,FORK	EA
0015840	CONN,TERMINAL,22-16 AWG,600,8MM,RING	EA
0015854	CONN,TERMINAL,22-16 AWG,600,BUTT SPLICE	EA
0015868	CONN,TERMINAL,22-16 AWG,600,F,DOUBLE CRIMP	EA
0015872	CONN,TERMINAL,22-16 AWG,600,M	EA
0015865	CONN,TERMINAL,22-16 AWG,600,PIN	EA
0015889	CONN,TERMINAL,22-18 AWG,8MM,RING	EA
0015849	CONN,TERMINAL,22-8 AWG,600 TWIST ON RED	EA
0015857	CONN,TERMINAL,8 AWG,600,1/4,RING	EA
0015852	CONN,TERMINAL,8AWG,600,3/8,RING	EA
0005007	CONN,TERMINAL,CRIMP,2.5MM	EA
0002477	CONN,TERMINAL,CRIMP,FEM,20-24	EA
E-2554	CONN,TERMINAL,CRIMP,FEM,26-30	EA
0006917	CONN,TERMINAL,CRIMP,FEMALE,22-	EA
E-2520	CONN,TERMINAL,CRIMP,FEMALE,24-	EA

FERRULES



Part	Description	UOM
0001532	FERRULE,0.25MM2,24AWG,YEL,S	EA
0001271	FERRULE,0.34MM2,22AWG,PUR,S	EA
0001533	FERRULE,0.5MM2,22AWG,WHT,SN WA	EA
E-2774	FERRULE,0.75MM2,18AWG,GRY,S	EA
0002775	FERRULE,1.5MM,16AWG,BLK,SN	EA
0005651	FERRULE,10MM2,8AWG,RED,SNG	EA
0001534	FERRULE,18AWG RED	EA
0005577	FERRULE,2.5MM2,14AWG,BLU,S	EA
0001535	FERRULE,24 AWG	EA
E-2780	FERRULE,4.00MM2,12AWG,GRY	EA
E-2780	FERRULE,6.0MM,10AWG,BLK,SN	EA
0015283	FERRULE,6.0MM,10AWG,BLK,SN	EA
0015284	FERRULE,INSULATED,2X18 AWG .394" GRY	EA
0009605	FERRULE,INSULATED,BLK,2X16 AWG	EA
0008768	FERRULE,INSULATED,BLU,2X14	EA
0015287	FERRULE,INSULATED,BLU,4AWG	EA
0015287	FERRULE,INSULATED,BLU,6 AWG	EA
0011389	FERRULE,INSULATED,BLU,6 AWG	EA
0011390	FERRULE,INSULATED,GRY,2X12	EA
0008766	FERRULE,INSULATED,GRY,2X18	EA
0008569	FERRULE,INSULATED,GRY,2X18AWG	EA
0015290	FERRULE,INSULATED,RED,#2	EA
0015286	FERRULE,INSULATED,WHT,20 AWG	EA
0015282	FERRULE,INSULATED,WHT,2X20 AWG	EA
0015285	FERRULE,INSULATED,YEL,2X10 AWG	EA
0008767	FERRULE,INSULATED,YEL,4 AWG	EA
E-2777	FERRULE,INSULATED,YEL,4AWG	EA
TF1	FERRULE,OTH,YEL,6.0MM,10AWG,SN	EA
E-2773	OTH,FERRULE,0.5MM,20AWG,WHT,SN	EA
E-2773	OTH,FERRULE,1.0MM,18AWG,RED,SN	EA
0000662	OTH,FERRULE,1.0MM,18AWG,RED,SN	EA
E-2775	OTH,FERRULE,2.5MM,14AWG,BLU,SN	EA
E-2776	OTH,FERRULE,2.5MM,14AWG,BLU,SN	EA
E-2779	OTH,FERRULE,4.0MM,12AWG,GRY,SN	EA
E-2588	OTH,FERRULE,4.0MM,12AWG,GRY,SN	EA

WIRE



Part	Description	UOM
0008544	WIRE,1/0AWG,BLK,MTW	FT
0005409	WIRE,10,WHT/BLU,MTW	FT
E-2092	WIRE,10AWG,BLK,MTW	FT
0002858	WIRE,10AWG,BLK,MTW	FT
0005408	WIRE,10AWG,BLU,MTW	FT
0006392	WIRE,10AWG,BLU,MTW	FT
0015795	WIRE,10AWG,GRN/YEL,MTW	FT
0015796	WIRE,10AWG,RED,MTW	IN
0008087	WIRE,10AWG,WHT,MTW	IN
E-2091	WIRE,10AWG,WHT/BLU,MTW,500	FT
0002768	WIRE,12AWG,BLACK,MTW,ROHS 500'SPL	FT
0002769	WIRE,12AWG,BLK,MTW,65STRAND,RO	FT
E-2080	WIRE,12AWG,BLU,MTW,65STRAND,RO	FT
0005261	WIRE,12AWG,BLUE,MTW,ROHS 500'SPL	EA
0008545	WIRE,12AWG,GRN/YEL,MTW	FT
0015793	WIRE,12AWG,ORG,MTW	FT
0015794	WIRE,12AWG,RED,MTW	IN
0015792	WIRE,12AWG,WHT,MTW	IN
0008815	WIRE,12AWG,WHT/BLU,MTW	IN
0015791	WIRE,14AWG,BLK,MTW	FT
0008813	WIRE,14AWG,BLK,MTW	IN
0015787	WIRE,14AWG,BLU,MTW,ORDER BY FT	FT
E-2095	WIRE,14AWG,BLUE,MTW	IN
0008814	WIRE,14AWG,GRN/YEL,MTW	FT
0015789	WIRE,14AWG,RED,MTW	FT
0015790	WIRE,14AWG,RED,MTW	IN
0015788	WIRE,14AWG,WHT,MTW	IN
0016957	WIRE,14AWG,WHT/BLU,MTW	IN
0002770	WIRE,16AWG,BLK,MTW	FT
E-2078	WIRE,16AWG,BLU,MTW	FT
0000668	WIRE,16AWG,BLUE,MTW,ROHS 500' SPOOL	EA
0000669	WIRE,16AWG,GRN/YEL,MTW	FT
0015786	WIRE,16AWG,ORG,MTW	EA
E-2684	WIRE,16AWG,RED,MTW	IN
0015785	WIRE,16AWG,RED,MTW	EA
0002440	WIRE,16AWG,WHITE/BLUE,MTW	IN
0015784	WIRE,16AWG,WHT,MTW	EA

A L * E L E C T R I C A L

0015146	WIRE, 16AWG,WHT,MTW	IN
0008376	WIRE, 18AWG,BLK,UNSHIELDED	FT
0002661	WIRE, 18AWG,GRN/YEL,MTW	FT
0001523	WIRE, 18AWG,MTW,BLUE, 16STRAND	FT
0008377	WIRE, 18AWG,ORG,MTW	FT
0008375	WIRE, 18AWG,RED,MTW	FT
0001910	WIRE, 18AWG,WHT,MTW	FT
TW4	WIRE, 18AWG,WHT/BLU,MTW	FT
TW5	WIRE, 18GA,25 CONDUCTOR 50' SPOOL	IN
0011945	WIRE, 18GA,3CONDUCTOR,SHIELDED	EA
0014952	WIRE, 18GA,YEL,MTW	FT
0003073	WIRE, 18GA,YEL,MTW	FT
0003087	WIRE,2/0,BLK,MTW	FT
0008421	WIRE,20AWG,GRN/YEL,MTW	FT
0008420	WIRE,22AWG,BL/WHT,MTW	FT
0007757	WIRE,22AWG,BLU,MTW	FT
E-2253	WIRE,22AWG,YEL,TFE	FT
E-2252	WIRE,22AWG/2C,PRP,PROFIB,500FT	EA
TW1	WIRE,22AWG/6C,BLK,TC,500FT	EA
0002764	WIRE,22GA,3 CONDUCTOR,SHIELDED	FT
0000664	WIRE,24AWG,YEL,UL1213	FT
0002662	WIRE,2AWG,BLK,MTW	FT
0002663	WIRE,2AWG,RED,MTW	FT
0004643	WIRE,2AWG,WHT,MTW	FT
E-2269	WIRE,3AWG,BLK,MTW,UL	FT
0006610	WIRE,4AWG,BLK,MTW	FT
E-2642	WIRE,4AWG,GRN/YEL,MTW	FT
E-2641	WIRE,4AWG,RED,MTW	FT
0003879	WIRE,4AWG,WHT,MTW	FT
0014969	WIRE,4AWG/4C,TRAY,UL,ROHS,CSA	FT
0008820	WIRE,4GA,WHT/BLU,MTW	FT
0016178	WIRE,6AWG,BLK,MTW	FT
E-2096	WIRE,6AWG,BLK,MTW	FT
0000782	WIRE,6AWG,GRN/YEL,MTW	FT
0014968	WIRE,6AWG/4C,BLK,VNTC	FT
0014966	WIRE,6GA,RED,MTW	FT
0014967	WIRE,6GA,WHT,MTW	FT
0002496	WIRE,6GA,WHT/BLU,MTW	FT
0008816	WIRE,8AWG,BLK,MTW	FT
0016179	WIRE,8AWG,BLK,MTW	FT
0002495	WIRE,8AWG,BLK,MTW	FT
0005262	WIRE,8AWG,BLU,MTW	FT
E-2640	WIRE,8AWG,GRN/YEL,MTW	FT
0014953	WIRE,8AWG,RED,MTW	FT
0014965	WIRE,8GA,WHT,MTW	FT
0011944	WIRE,8GA,WHT/BLU,MTW	FT

WIRE TRAY



Part	Description	UOM
0005709	CARRIER,CBL,,0.79,0.76,1.89R	IN
0012723	CARRIER,CBL,0.39,0.57,BLK	IN
0005892	CARRIER,CBL,2.00,2.00,GRAY	IN
0005894	CARRIER,CBL,4.00,4.00,GRAY	IN
0015293	CARRIER,CBL,CVR,4.00	IN
0015291	CARRIER,CBL,DUCT,1.50,3.00	IN
0015292	CARRIER,CBL,DUCT,2.00,2.00	IN
0016431	CARRIER,CBL,DUCT,4.00,2.00,GRY	IN
0015294	CARRIER,CBL,DUCT,4.00,3.00	IN
0013872	CARRIER,CBL,DUCT,CVR,3.25,0.47	IN
0014014	CARRIER,CBL,DUCT,TRAY,3.25	IN
0012418	CARRIER,CBL,DUCT,WIRE,1.2,6,GRY	IN
0012420	CARRIER,CBL,DUCT,WIRE,1.4,6,GRY	IN
0012403	CARRIER,CBL,DUCT,WIRE,1.6,GRY,CVR	IN
0012402	CARRIER,CBL,DUCT,WIRE,1.32,1.37,GRY	IN
0012919	CARRIER,CBL,DUCT,WIRE,1.5,6,GRY,CVR	IN
0012421	CARRIER,CBL,DUCT,WIRE,2.3,6,GRY	IN
0012406	CARRIER,CBL,DUCT,WIRE,2.4,6,GRY	IN
0012404	CARRIER,CBL,DUCT,WIRE,2.6,GRY,CVR	IN
0012443	CARRIER,CBL,DUCT,WIRE,3.3,6,GR	IN
0012407	CARRIER,CBL,DUCT,WIRE,3.4,6,GR	IN
0012405	CARRIER,CBL,DUCT,WIRE,3.6,GRY,CVR	IN
E-1396	CARRIER,CBL,DUCT,WIRE,GRAY,4.00	IN
0013538	CARRIER,CBL,TRAY,DIVIDER,2.75	IN
0013241	CARRIER,CBL,TRAY,DIVIDER,4.75	IN
0013516	CARRIER,CBL,TRAY,SPLICE PLT,3.	EA
0013536	CARRIER,CBL,TRAY,SPLICE PLT,GRAY	EA
0013537	CARRIER,CBL,TRAY,SPLICE PLT,GRAY	EA

OTHER ELECTRICAL



Part	Description	UOM
E-1259	FRM,CAB ENTRY	EA
0014708	FRM,CAB ENTRY	EA
E-2438	FUSE,CC,DEL,10A,600V	EA
0002468	FUSE,FAST,,5A,250V AC/DC	EA
E-1854	FUSE,FAST,2A,250V, AC/DC	EA
E-1853	FUSE,FAST,3A,250V AC/DC	EA
E-2370	FUSE,FAST,4A,250V AC/DC	EA
E-1064	FUSE,GLASS,DEL,1A,250V	EA
888J	FUSEHOLDER,G,1P,10A,800V,DIN	EA
0005157	CONDUIT,2.00,FLEX,GRY	FT
0007876	CONDUIT,EMT,1.5	IN
0003703	CONDUIT,FITTING,ST,3/4",BLK	EA
0003702	CONDUIT,FLEX,BLK, 3/4"	FT
0002482	CONTACTOR,FEM,22-26AWG	EA

TEE FITTINGS



Part	Description	UOM
P-3260-6	FITTING,TEE,1/4NPTX1/4TUBE	EA
P-3260-4	FITTING,TEE,1/4NPTX5/32TUBE	EA
S4277	FITTING,TEE,10-32UNFX5/32TUBE	EA
0015497	FTNG, TEE, 1/4" TUBE X 1/8" MALE NPT	EA
0007543	FTNG,TEE,0.50 NPT	EA
0014720	FTNG,TEE,0.50 TUBE	EA
0014721	FTNG,TEE,1/2 TUBE,NYLON	EA
0014722	FTNG,TEE,1/2 X 1/2,NYLON,MALE	EA
0009590	FTNG,TEE,1/2 X 1/2,NYLON,MALE	EA
0009589	FTNG,TEE,1/2NPT,1/2TUBE	EA
P-4899	FTNG,TEE,1/2TUBE	EA
P-4900	FTNG,TEE,1/4 TUBE X 1/4 NPT	EA
0014710	FTNG,TEE,1/4 TUBE X 3/8 NPT	EA
0014519	FTNG,TEE,1/4 X 1/4 TUBE,NYLON	EA
0008413	FTNG,TEE,1/4,BRASS	EA
P-4358	FTNG,TEE,1/4,RUN	EA
P-1710	FTNG,TEE,1/4TUBE	EA
0009588	FTNG,TEE,1/8NPT-5/32TUBE	EA
P-4352	FTNG,TEE,10-32UNF,5/32TUBE	EA
P-4902	FTNG,TEE,3/8 TUBE	EA
P-4901	FTNG,TEE,3/8 TUBE X 1/4 NPT	EA
P-4903	FTNG,TEE,3/8 TUBE X 1/8 NPT	EA
0014695	FTNG,TEE,3/8 TUBE X 3/8 NPT	EA
0014694	FTNG,TEE,3/8 X 1/4,NYLON,MALE	EA
0014693	FTNG,TEE,3/8 X 3/8 X 1/8,NYLON	EA
0014520	FTNG,TEE,3/8 X 3/8,NYLON,MALE	EA
P-4339	FTNG,TEE,3/8,BRASS	EA
P-3260-16	FTNG,TEE,3/8,STREET	EA
P-4896	FTNG,TEE,3/8NPTX3/8TUBE	EA

ELBOW FITTINGS



Part	Description	UOM
0014718	FTNG,ELB,1/2 X 1/2,NYLON,MALE	EA
0015548	FTNG,ELB,1/2 X 1/4,NYLON,MALE	EA
0013700	FTNG,ELB,1/2"-3/8",NYLON	EA
p-4621	FTNG,ELB,1/2NPT,1/2 TUBE	EA
P-4891	FTNG,ELB,1/2NPT,3/8 TUBE	EA
P-4890	FTNG,ELB,1/4 TUBE X 1/4 NPT	EA
P-4892	FTNG,ELB,1/4 TUBE X 1/8 NPT	EA
0014699	FTNG,ELB,1/4 TUBE X 3/8 NPT	EA
0014701	FTNG,ELB,1/4 X 1/8,NYLON,MALE	EA
0014702	FTNG,ELB,1/4 X 1/8,NYLON,MALE	EA
0013702	FTNG,ELB,1/4,NYLON,90 DEGREES	EA
p-3258-11	FTNG,ELB,1/4NPT,1/2 TUBE	EA
P-4622	FTNG,ELB,1/4NPT,1/4 TUBE	EA
P-3258-17	FTNG,ELB,1/4NPT,3/8 TUBE	EA
0009471	FTNG,ELB,1/4NPT,3/8TUBE	EA
P-3258-6	FTNG,ELB,1/4X1/8,MBSPTM,STL	EA
0014518	FTNG,ELB,1/8 NPTX5/32TUBE	EA
0003811	FTNG,ELB,1/8,BRASS	EA
P-4893	FTNG,ELB,1/8NPT,F/F, BRASS DIX	EA
P-4895	FTNG,ELB,3/8 TUBE X 1/8 NPT	EA
0014687	FTNG,ELB,3/8 TUBE X 3/8 NPT	EA
0013701	FTNG,ELB,3/8 X 3/8,NYLON,MALE	EA
P-3258-18	FTNG,ELB,3/8NPT,1/2 TUBE	EA
0014681	FTNG,ELB,3/8NPT,3/8 TUBE	EA
P-1177	FTNG,ELB,5/32 X 1/4,NYLON,MALE	EA
P-2264	FTNG,ELBOW,1/8NPT-1/4TUBE	EA

P
N
E
U
M
A
T
I
C

*

P

NEUMATIC * PNEUMATA

OTHER FITTINGS



Part	Description	UOM
0014550	FTNG,GREASE,1/4-28,TPR THD	EA
0000645	FTNG,GREASE,1/8"-27,STEEL	EA
0016199	FTNG,GREASE,1/8NPT,STR	EA
P-4790	FTNG,GREASE,RELIEF,1/8" NPT	EA
0001158	FTNG,HOSE,0.157 OD	EA
0006761	FTNG,HOSE,1/2 TUBE,FERRULE	EA
0001157	FTNG,HOSE,1/8,PLUG	EA
P-3101	FTNG,HOSE,3/8 TUBE,FERRULE	EA
0000623	FTNG,MUFFLER,1/4 NPT,SHORT	EA
5150-127	FTNG,NIPPLE,PIPE,1"D,2"L,NPT	EA
P-4392	FTNG,PLUG,1/16NPT INTERNAL HEX	EA
P-4897	FTNG,PLUG,1/4NPT 66371	EA
0002703	FTNG,PLUG-IN ELB,3/8 TUBE	EA
P-5017	FTNG,PUSHIN,07,RDCR	EA
0015550	FTNG,PUSHIN,1" SCH 80 PVC,CAP	EA
0015555	FTNG,PUSHIN,1/2",NYLON,PLUG	EA
P-3258-22	FTNG,PUSHIN,1/2",NYLON,UNION	EA
P-2471	FTNG,PUSHIN,1/2NPT,1/2TUBE	EA
P-4632	FTNG,PUSHIN,1/4 TUBE	EA
P-2742	FTNG,PUSHIN,1/4 TUBE-3/8 TUBE	EA
P-4552	FTNG,PUSHIN,1/4NPT-1/4TUBE	EA
P-2613	FTNG,PUSHIN,1/4TUBE,ELBOW S	EA
P-2741	FTNG,PUSHIN,1/8NPT,1/4TUBE	EA
P-1408	FTNG,PUSHIN,1/8NPT,1/4TUBE	EA
0014677	FTNG,PUSHIN,1/8NPT-5/32,TUBE	EA
p-3259-17	FTNG,PUSHIN,3/8,NYLON	EA
P-4353	FTNG,PUSHIN,3/8NPT,1/2TUBE	EA
0016558	FTNG,PUSHIN,3/8TUBE,PLUG	EA
0014678	FTNG,PUSHIN,4MM,M5-.8	EA
0007531	FTNG,PUSHIN,5/32,NYLON	EA
P-4387	FTNG,RDCR,0.50,0.38	EA
0015498	FTNG,RDCR,3/8 TUBE,1/8 NPT	EA
0008349	FTNG,RDCR,3/8-1/8,BRS,MALE TO FEMALE	EA
P-4340	FTNG,RDCR,3/8NPT,1/4NPT	EA
P-4388	FTNG,RDCR,3/8NPT-1/4NPTF	EA
P-4408	FTNG,STIGHT,3/8NPT TO 3/8 TUBE	EA
0007530	FTNG,STRGHT,3/8NPT TO 1/4 TUBE	EA
P-4889	FTNG,UNION ELB,3/8 TUBE	EA
0014712	FTNG,UNION STRT,3/8 TUBE	EA
0014676	FTNG,UNVRSL CONNECTOR,1/4 X1/8	EA
0011355	FTNG,Y,1/2,NYLON	EA
P-4904	FTNG,Y,1/2,UNION	EA
0014673	FTNG,Y,1/4 TUBE, Y CONNECTOR	EA
0009591	FTNG,Y,3/8 TUBE,NYLON	EA
E-2023	FTNG,Y,3/8PTC	EA
4491K41	FITTING,1/4NPT-1/8NPT,HEX,1/4 MALE 1/8 FEMALE	EA
P-2335	FITTING,CAP PLUG	EA
Y097004	FITTING,COMP.,1/8NPTX1/4COPPER 68X4	EA
P-2208	FITTING,COUPLING,1/4,BLOGUN	EA
P-3258-3	FITTING,ELBOW,#10-32-1/8 TUBE	EA
250-070	FITTING,ELBOW,1/8NPTX1/8TUBE	EA
P-1940	FITTING,GREASE 1641-B	EA
Y097050	FITTING,NIPPLE,1/8 BSPT(2) 0121.10.10 IMP.REF.P-1353	EA
P-4602	FITTING,NIPPLE,1/8NPTX1.5	EA
P-3358-4	FITTING,PUSHIN,1/4 UNION	EA
P-3259-5	FITTING,PUSH-IN,1/4-5/32TUBE	EA
P-2611	FITTING,PUSHIN,1/4NPT-5/32TUBE	EA
P-3259-2	FITTING,PUSHIN,1/4TUBE-1/4TUBE	EA
P-1158	FITTING,PUSHIN,1/8NPT-1/8TUBE	EA
P-1475	FITTING,PUSHIN,10-32-5/32TUBE	EA
P-2205	FITTING,Q-CONN,1/8NPT,MALE FOSTER FP215F	EA
P-3070	FITTING,Q-CONN,1/8NPT,M-END FP251, FOR LIQUID	EA
P-1298	FITTING,REDUCER,1/2NPT-1/4NPT,GALVANIZED	EA
P-4661	FITTING,REDUCER,1/4NPTX1/8NPT	EA
P-1932	FITTING,REDUCER,3/8-1/4,NIPPLE	EA
P-3260-9	FITTING,REDUCER,3/8NPT-1/8NPT	EA
0014671	FTNG,1/16",STL,PLUG	EA
0007371	FTNG,1/2 X 3/8 TUBE,REDUCER	EA
0014670	FTNG,1/2NPT - 1/2TUBE	EA
0015513	FTNG,1/4 X 5/32 TUBE,REDUCER	EA
0015502	FTNG,1/4",STL,PLUG	EA
0015742	FTNG,1/8",STL,PLUG	EA
P-1039	FTNG,1/8-27NPT,1/8-27NPT,F-F	EA
P-1583	FTNG,1/8NPT,MUFFLER	EA
P-4745	FTNG,1/8NPT,PLUG	EA

T
I
C

*

P
N
E
U
M
A
T
I
C

*

0014668	FTNG, 1/8NPT-1/4TUBE	EA
P-4073	FTNG,3/8" TUBE,NYLON	EA
0009582	FTNG,3/8NPT,MUFFLER	EA
0009586	FTNG,ADP,1/2NPT,1/2TUBE	EA
0009581	FTNG,ADP,1/2NPT,1/2TUBE	EA
0009584	FTNG,ADP,1/4NPT,1/2TUBE	EA
0009585	FTNG,ADP,1/4NPT,1/2TUBE	EA
P-4620	FTNG,ADP,1/4NPT,1/2TUBE	EA
0009583	FTNG,ADP,1/4NPT,3/8 TUBE	EA
P-4909	FTNG,ADP,10-32UNF,5/32TUBE	EA
0004904	FTNG,ADP,3/8NPT,3/8 TUBE	EA
0015587	FTNG,BARBED,TEE,1/4 COLE PARME	EA
P-4887	FTNG,COMP,1/8",BRASS	EA
P-4908	FTNG,CONN,1/4 TUBE X 1/4 NPT	EA
0014706	FTNG,CONN,1/4 TUBE X 3/8 NPT	EA
0014723	FTNG,CONNECTOR,#10-32 X 1/4	EA
0014696	FTNG,CONNECTOR,1/2 X 1/2,MALE	EA
0014697	FTNG,CONNECTOR,1/2 X 3/8	EA
0014713	FTNG,CONNECTOR,1/2 X 3/8	EA
0014711	FTNG,CONNECTOR,1/4 X 1/8,MALE	EA
0008843	FTNG,CONNECTOR,1/4 X 3/8,MALE	EA
0015810	FTNG,CPLG,1/8NPT,SCH40	EA
0014719	FTNG,CPLG,2",PLASTIC	EA

HOSE

Part	Description	UOM
1-2498-24	HOSE,0.375,0.500	IN
P-1179-24	HOSE,AIR TWIN,1/8IDX24"LG	IN
P-3580-7	HOSE,AIR,.12 ID X .25 X 24 LG TWIN BLUE & RED URETHANE	EA
1-1895-120	HOSE,AIR,0.19,0.31,100 FT.	FT
P-1631-120	HOSE,AIR,1/16 ID X 120",CLEAR	EA
P-1633-5	HOSE,AIR,1/16ID X 120",GREEN	EA
P-1630-12	HOSE,AIR,1/16IDX1/8ODX"5,YLLW	EA
P-1632-12	HOSE,AIR,1/16IDX1/8ODX12",BLUE	EA
P-1631-4	HOSE,AIR,1/16IDX1/8ODX12",RED	EA
P-1630	HOSE,AIR,1/16IDX1/8ODX4",GRN.	EA
P-1631	HOSE,AIR,1/16IDX1/8ODX50",BLUE	IN
P-1632	HOSE,AIR,1/16IDX1/8ODX50",GRN	IN
P-1633	HOSE,AIR,1/16IDX1/8ODX50",RED	IN
P-1632-7	HOSE,AIR,1/16IDX1/8ODX50"YLLW	IN
P-1630-8	HOSE,AIR,1/16IDX1/8ODX7",RED	EA
1-1895	HOSE,AIR,1/16IDX1/8ODX8",BLUE	EA
P-1630-120	HOSE,AIR,1/16IDX1/8X50FT,CLEAR	IN
P-1632-120	HOSE,AIR,1/16IDX120",BLUE	EA
P-1633-120	HOSE,AIR,1/16IDX120",RED	EA
P-3580-3	HOSE,AIR,1/16IDX120",YELLOW	EA
P-3580-2	HOSE,AIR,1/2ODX100"(BULK), BLACK	IN
P-3580-2	HOSE,AIR,1/4 OD	FT
P-2749	HOSE,AIR,1/4 OD	FT
1-1894-120	HOSE,AIR,1/4".I.D.X25' 45L000400	IN
P-3580-4	HOSE,AIR,1/8 ID X 120",CLEAR	EA
P-1627-300	HOSE,AIR,1/8 OD,BLACK	FT
P-1345	HOSE,AIR,1/8"IDX1/4"ODX300"	IN
P-1345-72	HOSE,AIR,1/8,URETHANE,CLEAR UR, 500'	IN
P-1626-360	HOSE,AIR,1/8,URETHANE,CLR,72"	EA
P-1627-360	HOSE,AIR,1/8ID X 1/4 OD X 360" BLUE	EA
P-2922-120	HOSE,AIR,1/8ID X 1/4OD X 360" GREEN	EA
P-1627-12	HOSE,AIR,1/8ID X 120",YELLOW	EA
P-1628-12	HOSE,AIR,1/8IDX1/4ODX12",GRN.	EA
P-1626-120	HOSE,AIR,1/8IDX1/4ODX12",RED	EA
P-1627-120	HOSE,AIR,1/8IDX1/4ODX120",BLUE	EA
P-1628-120	HOSE,AIR,1/8IDX1/4ODX120",GRN.	EA
P-1628-15	HOSE,AIR,1/8IDX1/4ODX120",RED	EA
P-1628-360	HOSE,AIR,1/8IDX1/4ODX15",RED	EA
P-2922	HOSE,AIR,1/8IDX1/4ODX360"	EA
P-1626	HOSE,AIR,1/8IDX1/4ODX50' YELL	IN
P-1627	HOSE,AIR,1/8IDX1/4ODX50",BLUE	IN
P-1628	HOSE,AIR,1/8IDX1/4ODX50",GRN	IN
P-3580-6	HOSE,AIR,1/8IDX1/4ODX50",RED	IN
P-3580-5	HOSE,AIR,3/8 OD,BLACK	FT
P-1986	HOSE,AIR,3/8 OD,BLACK,147PSI	FT
P-1936	HOSE,AIR,4MMIX6MMODX82",BLUE	IN
1-3619-5	HOSE,AIR,4MMX25M,POLYURETHANE	IN
1-3619-6	HOSE,AIR,4MMX5"L REF.IMP.1-1895-5	EA
1-3700-12	HOSE,AIR,4MMX6"L REF.IMP.1-3183-6	EA
1-3700-3.5	HOSE,AIR,4MMX6MMX12.00,BLUE REF.IMP.1-1894-12	EA
1-3700-5	HOSE,AIR,4MMX6MMX3.50,BLUE REF.IMP.1-1894-3.5	EA
1-3619-9	HOSE,AIR,4MMX6MMX5.00",BLUE REF.IMP.1-1894-5	EA



P N E U M A T

1-3183-10	HOSE,AIR,4MMX9"L REF.IMP.1-1895-9	EA
P-1685	HOSE,AIR,5/32 OD X 10",CLEAR *REF.METRIC 1-3619-10	EA
1-3183-12	HOSE,AIR,5/32 OD X 100'(BULK)	IN
1-3183-18	HOSE,AIR,5/32 OD X 12" CLEAR *REF.METRIC 1-3619-12	EA
1-3183-24	HOSE,AIR,5/32 OD X 18" CLEAR	EA
1-3183-30	HOSE,AIR,5/32 OD X 24" CLEAR	EA
1-3183-6	HOSE,AIR,5/32 OD X 30" CLEAR	EA
1-3183-8	HOSE,AIR,5/32 OD X 6" CLEAR REF.METRIC 1-3619-6	EA
1-3183-9	HOSE,AIR,5/32 OD X 8" CLEAR	EA
1-3183-120	HOSE,AIR,5/32 OD X 9" CLEAR *REF.METRIC 1-3619-9	EA
P-3580-1	HOSE,AIR,5/32 ODX 120" CLEAR	EA
1-3702-4	HOSE,AIR,5/32"OD,BLACK	FT
1-3702-9	HOSE,AIR,5MM OD X 4",CLEAR	EA
EMT110	HOSE,AIR,5MMOD X 9",CLEAR	EA
P-1070	HOSE,CHAD,1.5	FT
P-1070-10	HOSE,RUBBER,1/4IDX1/2OD,BLK,25	FT
P-1070-12	HOSE,RUBBER,1/4IDX1/2ODX10" GOODYEAR,BLACK,250PSI	EA
P-1070-15	HOSE,RUBBER,1/4IDX1/2ODX12" GOODYEAR,BLACK,250PSI	EA
P-1070-24	HOSE,RUBBER,1/4IDX1/2ODX15" GOODYEAR,BLACK,250PSI	EA
P-1070-6	HOSE,RUBBER,1/4IDX1/2ODX24" GOODYEAR,BLACK,250PSI	EA
P-1070-60	HOSE,RUBBER,1/4IDX1/2ODX6" GOODYEAR,BLACK,250PSI	EA
0010674	HOSE,RUBBER,1/4IDX1/2ODX60"	EA
P-1967	HOSE,VAC,4.00,4.63,BLK	FT
P-4831-12.00	HOSE,VACUUM,.13X600" 27041	IN
P-4831-18.00	HOSE,VACUUM,1.00 FLEX PVC 12.00 LG	IN
P-4831-6.00	HOSE,VACUUM,1.00 FLEX PVC 18.00 LG	IN
P-4831	HOSE,VACUUM,1.00 FLEX PVC 6.00 LG	IN
0009312	HOSE,VACUUM,1.00,100.00,GREY	IN
P-4832	HOSE,VACUUM,1.50,1.63	FT
P-4850	HOSE,VACUUM,1.50,LTGREY	IN
0007793	HOSE,VACUUM,2.00,GRAY,SCH40	FT
0014201	HOSE,VACUUM,2.32,2.88	FT
P-2892-1	HOSE,VACUUM,4.00 ID,4.50 OD	FT
888D	HOSE,VACUUM,ANTISTAT,3ID	IN